



L1461

Jⁿ D'Aguiar —
Water Street
Liverpool.

24th Aug 1805

bettes Lance 5 grs to 2 1/2
That the Underw^m on
the Vigilant from Wexford
pay the loss. —

A 1804

A

	Ship	voyage	on	offices	sum	for	amto	
4 Jan	Ann. Vaughan	Bristol Liv	Grain	Ra	100	1 1/2	1.11.6	A
7	adventure	plaskes Liv Barba	Ship	Ro	100	6.3	6 6. -	A
13	alexander	grammoch Liv Afr	Goods	Ca	100	10.3	10 10. -	A
16	ann Howell	Bristol Liv	wheat	Ra	100	1 1/4	1 6. 3	A
23	Ann Mullen	Lombard ⁷ Liv	gs	Ma	100	2.	2 2. -	A
26	Argo, Smith	Liv New York	gs	Ro	100	3.	3 3. -	A
4 feby	Alexander Thompson	round	gs	Ra	200	15	31 10. -	A
10	America Watson	Savannah Liv	gs	Ca	100	2 1/2	2.12.6	A
11	angola, Boyd	round	gs	La	200	15.3	25. 4	L
14	Alexander, m ^c Intock	Ch-town Liv	gs	Ca Ra	200	2 1/2	5. 5 0	A
15	America Watson	Savannah Liv	gs	Lanu	200	2 1/2	5 5	A
16	apollo, Cummings	Africa W J	gs	Ro La	200	10-	21. -	A
18	annabella, Eurlis	round	gs	Ra	100	15	15 15. -	Aa
20, 15 mar	Adrianna Seddon	round Hind	gs	Ro	200	12	25 12	L
	active Hornby	Liv Demerara	Sh	Ro	100	6.3	6. 6	L
24	Alexander Thompson	round	gs	La	100	15	15. 15	^{93.1-} A
27	Agnes	Trinidad Liv	gs	La	100	8.4	0 0	A
5 Mar	Alexander Rees	Limeric Liv	gs	Ro	100	3	3. 3.	A
	Active, Braithw	Jamaica Liv	Sh	Ma	100	10 5	10. 10	A

A

1804	Ship	voyage	on	offices	sum	per	amt		
24 mar	Adelphi Robinson	round	H & G	Ro La	200	12.	25	---	L
	Arise, Bland	Noris Liv	Ship	Ca	100	5.2	5	5	A
26	alarm, Stephens	Lark Liv	G ^t	La	100	1 1/4	1	6.3	#
7 apr	ann, Williams	Liv Angola	G ^t	Ro La	200	6.1	12	12	A
9	atalanta	Lisbon Liv	G ^s	Ro	100	8.4	8	8	A
15	Acos, Miller	Liv Stettin	G ^s	Ca	100	2 1/2	2	12.6	A
	Alexander, Ward	Liv Gold Coast	G ^t	Ro	100	6.1	6	6	A
13 June	Ardent	Liv Lark	G ^s	Byrne	300	1 1/2	4	10	A
18	atlas, Whitefe	Jamaica Liv	H	Ca Ma	200	8.4	16	16	A
22	Actwi, Aikin	Liv Jamaica	G ^s	Ma	200	6.3	12	12	A
29	atlas, Whiteside	Jamaica Liv	G ^s	Ma	100	4	4	4	A
6 July	Ann, Stout	Liv St Johns	H	Ro	100	5	5	5	A
4 Aug	Ann, Bradford	Liv Boston	G ^s	Ma ² La	300	2	6	6	A
6	Attention	Liv Varel	G ^s	La	200	1 1/2	3	3	A
	Alexander, Rees	Quebec Liv	Wh	La	100	7.2	7	7	C
	Sept ^r Aguilar	London Jamaica	H	ag ^r	300	6.2	18	---	A
19 do	Annawan	Liv philad ^a	G ^s	Ro	200	2	4	---	A
20	Amalia Kinder	Danzic Liv	G ^s	La	100	3	3	3	A
27	ann Horen	Liv London	G ^s	Ca	100	1 1/4	1	6.3	A
4 Oct	Ann Howard	Liv Africa	G ^t	La	150	6	9	9	L

A

A

1804 Ship voyage

8 Oct Anna^m Intere Liv. portrush
 '27 — Ann. Howard Liv africa
 5 Nov Ann Brent Liv Limeric
 — — Active Carr Liv Dublin
 9 — Active Jones Liv Greenock
 15 — Abigail & Anna Younghall Liv
 " — Atlas, Whiteside Cork, Jamaica
 20 Aphrodite — Dantzic Liv
 23 — Ann. porteus africa. Jam^{ca}
 5 Nov Active Aikin Jamaica Liv

1805

11 Jan^r Alexander Rees Limeric Liv
 15 — Adriana Ricket Liv New York
 30 — Active, Taylor Waterford Liv
 31 — Albion, Atkinson Liv. New York
 2 Feb — Alchemist — St Vincent Liv
 5 — Active Mills Liv. Africa
 7 Mar Ann Eliza Cork St Vincent
 11 do Augusta Bland Lon. Nevis

A

on Officers sum per amts

Gs	ma	100 1/4	1 6.3	A
Gt	ma	100 6	6 6.	L
Gs	ma	100 3	3.3	A
Gs	La	100 1	1 1	±
Gs	Lase	150 1	1 11 6	A
Gs	La	100 1/2	1 11 6	A
Sh.	Ro	300 6.3	18, 18.	A
—	Grain Ro	100 12.	12 12	-A
litts	Sh La	100 10	10 10	A
Gs	Ro	200 12.4	25 4	A

Gs	Ro	100 3	3 3	A
Gs	Ro	200 2	4	A
Gs	La	100 1/2	1. 11. 6	A
Sh	Ro	100 6	6. 6.	A
Sh	ma	100 6.3	6 6	A
Gs	La	100 12.2	12 12	A
Gs	ma	150 50/	3 15	A
Gs	Ro	200 5 1/2	10 10	A

B

1804-	Ship	voyage	on	offices	sum	pm	amt	
16 Jan ^r	Bee,	Bristol Liv	Wheat	R ^a	100	1 1/4	1.6.3	A
10 Feb	Barton, Chalmers	Liv Demer ^a	Sh	La	200	5.1	10.10	A
11	Barbados, Kerslake	Liv Barb ^a	Sh	R ^o R ^a	300	5.1	15.15	A
25	Do	Do	Gs	ma	100	5.1	5.5	A
3 Mar	Borias Radclaff	Liv Dantzic	Gs	La	200	2 1/2	5.5	A
13	Do	do	Ship	R ^o R ^a	200	2	2.2	A
16 April	Brittania Bush	Demer ^a Liv	Sh	R ^o	100	5.2	5.5	A
May	Bryan Dawson	Antigua Liv	Gs	R ^o	100	6.3	6.6	A
14 June	Brittania, Leary	Liv Jamca	Gs	ma	100	6.	6.6	A
25 July	Benjamin	St Vincent Liv	Gs	ma	200	6.3	12.12	A
30	Brittania, Thompson	Liv Lemerc	Wh	R ^o	100	2.	2.2	A
31	Bryan, Douglas	Antigua Dublin	Gs	R ^o	200	6.3	12.12	A
31	Brothers Ravely	Tortola Liv	fr	R ^o	200	6.3	12.12	A
25 Sept	Barstock	Jamaica Liv	Gs	ma	200	8.4.	16.16	A
11 Oct	Do	Cork Liv	Gs	La	200	1 1/2	3.3	A
5 Nov	Brothers Ravely	Liv Dem ^{ra}	Gs	R ^a	200	6.3	12.12	A
10 do	Benjamin	Cork Barb ^a	war ^d Gs	R ^o	200	2 1/2	5.5	A
14	Balance	Dantzic Liv	Gs	R ^a	100	10	10.10	A
23	Botey & Mary	Cork Liv	Gs	ma	100	1 1/2	1.11.6	A

B

B

1804

29 nov Benson Arkew Jam^{ca} Liv

7 dec Britannia --- Lork St Vincen

1805

4 Jan Betty & Mary Liv, Cork

10th Betsey, Thompson Liv Virginia

20 --- Barbadoes packet Ch-ton Liv

30 --- Betty Dawson Isle of man Du & Liv

4 Feb Bowman --- Limeric Liv

11 Mar Britannia Rydland Liv

12 --- Barrett --- Jamaica Liv

3 April Alchemist & Margery & Mary Wine^t Liv

3 May Betsey, Smith Ch-ton Liv

18 --- Byam, Davidson Antigua Liv

" --- Brothers, Rawley - Demer^a Liv

17 June Byam --- Antigua Liv

19 --- Barbadoes Lewis Barbadoes Liv

22 Bacchus Hughes Jamaica Liv

27 Brunswick Savannah Liv

28 Brutus Bonee N Orleans Liv

B

Coffee ma --- 100 15.6 15 15 --- A

G^s ma --- 200 50/ 5 --- A

Ep La --- 100 1 1/2 1 1/2 --- A

Ph La --- 100 8.2 8.2 --- A

Cotton La --- 200 6 12 12 --- A

Liv ma --- 150.2 3.3 --- A

G^r R^o R^a 200 3 6 6 --- A

Ep Ra --- 100 1 1 1 --- A

Ph Ra --- 200 8.4 16 16 --- A

Wine^t Liv Ra --- 200 6.3 12 12 --- Can^dG^s R^o --- 200 2 4 4 --- AG^s R^o --- 200 10.5 21 --- LG^s R^o --- 200 10.5 21 --- AG^s R^a --- 100 12.5 12 12 --- LG^s Ra --- 200 8.2 16, 16 --- AG^s La --- 100 12.6 12 12 --- A

Ep La --- 100 2 2 --- A

G^s La --- 100 4 1/2 4 1/2 6 --- A

B

1805

Ship

voyage

13 July	Bolton, Grayson	Nevis Liv	- G ^r Ro	200	8.4	16	16	- A
	Benj ⁿ & Elizabeth	St Bartho Liv	- G ^r La	100	8.4	8	8	- A
15	Betsy & Mary	Liv Cork	- G ^r La	200	1 1/2	2	12.6	A
22	Beckford & Nicks	Liv Memel Liv	Sh La	100	9.4	9	9	- A
27	Benson, Askew	Jamaica Liv	G ^r Ra	200	10.5	21		A
1 August	Birmingham	Savannah Liv	- G ^r Ra	200	4	8	8	- A
16	Boyne & Jafford	Liv Chitown	Sh. Ro	200	3	6	6	- A
19	Brunswick	Callaghan Liv Savannah	G ^r La	200	4	8	8	- A
"	Brittania	Thompson Ballynapi Liv	G ^r ma	200	2 1/2	5	5	- A
22	Bess, Little	Surinam Liv	G ^r Ro	100	10.6	10	10	- A
"	Benson, Askew	Jamaica Liv	G ^r Ins ^{ce}	180	10.5	18	18	- A
24	Boston, Frost	Liv Boston	G ^r ma La	300	3	9	9	- A
"	Barton, Chalmer	Liv Barbados	G ^r Ro	126	6	7	10.9	A
8 Sept	Betsy, Thompson	Virginia Liv	Sh La	100	8.1	8	8	- A
14	Bacchus	Jenderson St Peterb ^{rg} Liv	G ^r Ro	100	4.2	4	4	- A
24	Barrett	Louthian Liv Jamaica	Sh Ra	200	6.3	12	12	-
7 Oct	Brothers	Henderson Jamaica Liv	G ^r Ro	100	15.7	15	15	- A
Dec	Betsy	Liv London	G ^r Ra	200	1 1/2	3	3	- A
	Britannica	Berbee Liv	G ^r ma	100	12.6	12	12	-

B

C

1804 Ship voyage

			on	offices	sum	pm	amts	
5 Jan ^y	Cressent	Cowan	Jam ^{ca}	London	wood	Ca	100 15.7	15 15 - A
6	Lumberland	M. S.	d ^o		Specie	m ^a R ^o	400 2.	0. 0. - A
14	Chesterfield	Nich ⁿ	Liv	Jamaica	Gs	Ca	100 4.	4 4 - A
16	Charles	Carney	do		Ship	Ra	100 4	4 4 - A
4 Feb ^y	Catalina		St Tho ^s	Havana	Sh	G ^s R ^o	200 2 1/2	5 5 - A
7	Catharine	Carson	Liv	Belfast	Gs	Ra	100 25/	1. 5. - A
13	Ceres	White	Weymouth	Liv	Gs	ma	100 2	2 2 - A
14	Commerce		Limerick	Liv	Cash	R ^o	100 3	3. 3. - A
"	Cambridge	Lewis	Liv	Jamaica	Ship	Ra	100 4	4. 4. - A
20	Commerce	Kearney	Liv	Belfast	Gs	Ca	100 25/	1. 5. - A
26	Catharine	Swans	Bristol	Liv	G ^s	Ra	100 1 1/2	1. 11. 6. - A
14 April	Castle	Douglas	Liv	Memel	Sh	Le £30	100 5.2	5. 5. - A
"	Caldicot	Castle	Demer ^a	Liv	To G ^s	R ^o	200 6.1	12. 12. - A
17	Cosmo	Bunderson	D ^o		Sh	R ^o	100 5.2	5 5 - A
23	Cicero		New York	Liv	G ^s	ma	100 2	2 2 - A
5 June	Clyde	Neale	Jam ^{ca}	Liv	G ^s	ma	300 0.4	25. 4. - A
18	Cornwall		D ^o	D ^o	Sh	Ra	200 8.4	16 16 - A
22	Cumberland	Blake	Virginia	mdet	F	ma	100 3 -	3 3. - A
25	Concord	Adams	Riga	Liv	R ^o		200 5.2 1/2	10. 10. - A

C

C

1804

24 July Blyton, Bateman Jam^{ca} Liv
 25 - Conway, Gibbs St Lucia Liv
 4 Aug^t Carolina Ratke Danzig Liv
 27 Sept Charlotte Forest Liv newy
 5 Oct Cotton planter Liv newyork
 11 do Cambridge - - Jamaica Liv
 " - - Commerce Kerney Belfast Liv
 13 - - Cambridge - - Jam^{ca} Liv
 20 Ceres, Elliot africa W In
 30 Commerce - phil^a Liv
 5 Nov Castor paul Liv Dem^{ra}
 Commerce Kerney Liv Belfast
 20 - - Clarendon Grace Wund^{Brookbank & Litt}
 22 Christiana Francis Barbice Liv
 26 City of London St Lucia Londⁿ
 10 Dec Ceres Crow Dom^{ca} Liv
 10⁰⁵ 24 Jan⁷ Chesnic Cork Liv
 30 - Columbo - - Dublin Liv
 2 Feb Clementina Dumfries Liv

Gs - Case --- 200 8.4 16 16 - A
 Gs ma 50.3^S 200 8.4 16 16 - L 100
 Wh La --- 100 2 11 6 A
 Gs Ra - 200 1 - 2 2 - A
 Gs ma 190 2 1/2 4 19.9 A
 Fr. H. Ra --- 200 15.6 31 10 - A
 Gs La --- 100 19^a 1 1 - A
 Wine ma 30 15.6 12 12 - A
 Gs La 100 16 16 16 - A
 Gs ma 100 3 - 3 3 - A
 Gs Ro - 200 6.3 12 12 - A
 Gs Ca --- 140 1 1/4 1 16 9 A
 Ph & Gs La R^a 200 21.3 A 2 - L
 Gs Ro --- 100 19.4 10 10 - L
 Gs Ro --- 100 12.5 10 10 - A
 1/4 R^o --- 200 8.4 16 16 - A
 Gs ma 110 1 1/2 1 13.7 A
 Gs Ro 100 1 - 1 1 - A
 G^r R^o 200 1 2 2 - A

C

C

C

1805	Ship	Voyage	on	off	sum	pm	amts	
5 feb	Cicero, parker	Havanna, Liv	w ^g	G ^s	Ra	Ma	300 5	15 15 - A
15	Chatty	Lisbon Liv	G ^s	Ra			200 6.3	12 12 - A
	Chance	do	G ^s	Ra			200 6.3	12 12 - A
12 mar	Cornwall	Jamaica Liv	sof	Ra			200 8.4	16, 16 - A
	Clifton	Do		Ra			200 8.4	16, 16 - A
	Ceres, martin	Belfast Liv	G ^s	Ro			100 1.	1. 1. - A
13	Cambria	Holyhead Liv	G ^s	ma			150 1	1 11 6 ±
15	Commerce Kennedy	Liv Belfast	G ^s	ma			200 1.	2 2 - A
	Countess of Stair	Liv Lond ⁿ	G ^s	Ra			100 1 1/4	1. 6. 3 A
	Charlotte	Liv Newry	G ^s	Ra			100 1.	1. 1. - A
24	Cambridge	Liv Jamaica	H	Ra			200 10.5	21 - A
26	Cicero	Liv Newyork	G ^s	La			100 2 1/2	2 12 6 A
1 may	Copernicus	Dantzic Liv	G ^s	Ro			100 2	2. 2 - A
3	Chyswick	Liv Barbadoes & back	H	Ra			200 20.7	42 - A
	Ceres molineux	round	G ^s	Ro			100 20.3	21 - A
	do	Liv africa	H	Ro			100 6	5. 6. - A
4	Commo Bunderon	Liv pernan & back	H	Ra			200 8.4	16 16 - A
10	Commerce,	Liv Belfast	K	G ^s	Ma	La	200 2	4 4 - A
23 June	Columbine	Liv Dublin	INDI	Ra			200 1	2 - A

D

1804 Ship voyage

19 Jan^y Despatch Rydland Liv
 7 Feb Dart Ch town ftabroin
 16 --- Dove, Dixon Livolverstone
 24 --- Diligent Marshall Demer^a Liv
 1 March Diana Ronaldson Cork Jam^{ca}
 25 April Duke of Kent Forter Dem^{ca} Liv
 May Deane Kottwick Trinidad Liv
 4th July Devonshire -- Liv Exeter --
 3 Augt Diamond Kellala Liv
 4 --- Die Dankbarkeit Dantzic Liv
 19 Nov Demerara -- Clyde Dem^{ca}
 18 Dec Dart, paul Ch town St Cro

1805

15 Jan^y Diana Hobbroke Liv Baltim^{ca}
 30 --- Dove --- Liv Ulverston
 16 Feb Diana --- Liv Baltimore
 16 Mar Despatch Chum Savanna Liv
 26 --- Demerara Inglis Dem^{ca} Grenad
 --- Diligint Ship Liv

D

on officers sum pm amt

Grain Ra	100	1	1	1	0	A
Sh Ro	100	2 1/2	2	12	6	A
Salt ma	200	1	2	2		A
Sh Ro	200	6.2	12	12		A
Gs Ma	170	4	7	2	0	A
Sh Ro m ^a La	300	6.3	18	18		A
Sh Ro	100	10.5	10	10		A
Gs ma	200	2	4	4		A
Gs Ro	100	1 1/2	1	11	6	A
Wh La	100	1 1/2	1	11	6	A
Gs Ro	200	6	12	12		A
Gs Ro	200	4	0	0		A
Gs ma	200	2	4			A
Gs ma	200	1	2	2		A
Gs Ra	100	2	2			A
Gs Ma Ro	200	2	4			A
F Rodie	200	6.1	12	12		A
Gs Ra	100	2	2			A

D

1805

Pass

voyage

25 May Desri Rega Liv
 14 June Diligence Gardner Jamaica Liv
 19 - - - - - Dominica packet Barbadoes Liv
 23 - - - - - Diana Holbrooke Liv Baltimore
 27 - - - - - Do - - - - -
 19 Augt David & Jean Banff Liv
 22 Demarara Inghis Liv Demerara
 Dale Smith. Lon. Domin^{ca}
 Nov Duncan Falcon Liv Jam^{ca} Liv
 Decr Dominica packet Liv Barbadoes
 30 - David Shaw - Cork Jamaica

on Office sum per amt

G^d Ro - 100 5.2 5 5 0 A
 St f Ra - 200 13.9 37.16 0 A
 Th Ra La 200 10.2 ~~21.10~~ A
 G^d Ma - 150 6.1 9.9. - A
 G^d Ma - 100 4. 4 4 - A
 G^d Ro - 200 2 1/2 5.5. - A
 G^d Ma - 200 6.2 12 12 -
 G^d La Ma 400 6.3 25 12 -
 Th La - 100 13.6 13 13. -
 Th La - 200 15 1/2 10 10 -
 Th Ra - 300 6.3 18 18. -

D

E

1804 Ship voyage

14 Jan^y Elizabeth, Giles round
 " " Eliza, Wade - Liv^{ty} Trinidad
 26. . . Experiment Carson Kirkubrick ^{Supt in}
 27. . . Eliza, Wade - Liv^{ty} Trinidad
 " " Eliza, Stokes Savannah Liv^{ty}
 11 Feb^y Experiment Higgs Jam^{ca} St Augustin^e
 3 Mar Experiment Gray Demer^e Liv^{ty}
 19 - Enterprise Lawson Havana Liv^{ty}
 11 April Emigkait Volcker Liv^{ty} Pralsune
 May Elizabeth, - - Bridgewater Liv^{ty}
 18 June Emigkait. Liv^{ty} Flensburg
 26. Elizabeth, McInt Jamaica Liv^{ty}
 4 July Edington Heyman London Jamaica
 25. - Eliza, Stokes Liv^{ty} Savannah
 7 aug^t Eliza, Horton London Boston
 24 Sep^r Elizabeth Giles Havana Liv^{ty}
 25 - Earl of Liverpool mullion, round
 29 - Eliza Williams Liv^{ty} Dublin
 14 Nov Emmeline Liv^{ty} Cork

E

on Prices sum per amt

gs Ship R^o . . . 200 12. 25. 4. 0 A
 Ship - Ma - - 100 6 2 6. 6. - A
 gs - Ma - - 100 2 2. 2. - A
 gs - Ca - - 100 8. 4 8. 0 - A
 Cotton Ra - - 100 3 3. 3. - A
 gs - Ra ma 200 4 0. 0. - A
 H. - R^o - - 200 8. 2 16. 16. - A
 qt - Ra ma 200 8. 2 16. 16. - A
 gs Ra 100 2 1/2 2 12 6 A
 . . . gs - Ra . . . 100 1 - 1. 1. - A
 gs R^o - 100 2 2 2 - A
 gs Ca ma 300 4 16. - A
 gs agr 300 6. 1 18. - A
 gs R^o 200 2 4. - A
 gs R^o 200 2 4. - A
 qt R^o 100 8. 2 8 8 - A
 Hindenburg La - 100 20. 21. - T
 gs ma - 100 1 - 1. 1 - A
 gs ma 100 1 1/2 1. 11. 6 A

E

1804

Ship voyage

29 Nov Eleanor - - - - - Waterford Liv

1805

4 Jan Elizabeth Wm Liv Dublin

11 Egyptian m risk

15 Elizabeth, Courtney Liv Newry

2 Feb Eliza, Lloyd Liv Wm

7 do Eliza, Stokes Liv, Savannah

~~Eliza, Stokes Liv, Savannah~~6 Mar Elbe - - - - - ~~Amherst~~ Dem^o Liv

Esther, Irvin Africa Ch-town

13 Elizt m^c Intock Jam^{ca} Liv

3 April Ellen - - - - - Do Do

26 Experiment Westport Liv

1 May Egyptian - - - - - Jamaica Liv

3 Eliza, Pugh Liv Cork

8 Elizabeth Ballinys Liv

11 Aurora - - - - - Lisbon Liv

17 June Enterprise Jamaica Liv

22 Eliz^t & Domin^{gus} packet Barbado Liv

E

on office sum pm amts

G^s Ra - 100 1/2 1 11 6 - AG^s Ma - 100 1 1 1 0 - AG^c R^o - 200 12 25 4 - AG^s R^o - 100 25 1 5 - A

Sh La - 200 5 2 1/2 10 10 - A

G^s Ma - 175 2 3 10 - ASh R^o - ~~200 6 3 12 12~~G^s Ma - 100 12 5 12 12 - AG^s R^o La 200 10 20 0 - AG^s Ma - 200 8 4 16 16 - AG^s Ra - 100 0 0 0 - AG^s Ra - 200 3 6 6 - AG^s Ra - 200 15 7 31 10 - AG^s Ra - 100 1 1/4 1 6 3 - AG^s Mather 200 2 1/2 5 5 - AG^s R^o 200 8 4 16 16 - AG^s R^o Ma 200 12 7 25 4 - AG^s La - 100 12 6 12 12 - A

E

1805

Ship

voyage

4 July Elizabeth m^m Channel Liv
 11 " Elizabeth, Boyle Barb^v Liv
 " " Ellis, Reynolds Jamaica Liv
 22 " Elizabeth, Hann Stolpe Liv
 28 " Emerald, Eccles Liv Africa
 6 Aug Enterprise, Martin Duntzie Liv
 8 " Eliza Howey, Liv Baltimore
 14 " Eliza Stokes Liv Savannah
 16 " Eliza Howey Liv Baltimore
 19 " Eliza Stokes Liv Savannah
 24 Elbing, Gerrad Duntzie Liv -
 28 Elizabeth McIntoch Liv Jamaica
 3 Sept Eliza, Lloyd St Thomas Liv
 14 Nov Elizabeth Hannah Newry Liv
 Ellis - - - - - Liv Jamaica
 12 Dec Esther Collins Dubec Liv
 Euphrates - Drogheda Liv

E

on office sum for amts

G ^y Ma	100	2	2	2	0	A
G ^y La	100	10.5	10	10	-	A
M ^f Ra	300	10.5	31	10	-	A
G ^y Ra	100	4	4	4	-	can ^d
G ^e Ho	100	6	6	6	-	
G ^y La	200	2	4	-	-	A
G ^y Ra	200	4	0	0	-	A
G ^y La	200	4	8	8	-	A
G ^y Ma	100	4	4	4	-	A
H ^e La	100	3	3	3	-	A
G ^y Ra	200	2	4	-	-	A
G ^y Ma	200	7.3 $\frac{1}{2}$	14	14	-	
H ^e La	100	10.5	10	10	-	A
G ^y Ma	150	1 $\frac{1}{4}$	1	17	10	A
H ^e Ra	200	6.3	12	12	0	
G ^y La	100	10.2	10	10	-	
G ^y La	100	1 $\frac{1}{2}$	1	11	6	A

F

1804	Ship	voyage
6 Jan ^y	Factor, Conway	Liv Belfast
7 ---	Fanny, Irwin	Sam ^{ca} Liv ---
23 . . .	Fletcher Harrison	Liv Dublin
30 . . .	Fanny Jackson	Wattford Liv
7 Feb ^y	Friends, Toby	Lisbon Liv ---
13 . . .	Forbes Barret	Demeraca Liv
26 . . .	Flora, Hait	Phil ^a Liv ---
8 June	Fame, Davidson	Dem ^{ca} Liv
17 July	Fame, Lewis	Liv Baltimore
26 . . .	Farina Holmes	petersb ^g Liv
13 Oct	Friendship -	Liv Cork
27 -	Ford, Fletcher	Liv Lond ^y
5 nov ^r	Flora m ^r erson	Liv portrush
9 ---	do	do
---	Fortitude	Sherrat Surinam ^{Liv}
20	Flora	Doek till land ^o
1805 18 Feb ^y	Friends	Lisbon Liv
11 mar	Fortune	Sam ^{ca} Greenock
29	Fame, Wilme	Liv Dublin

F

on offices sum jam amt

Gs. Ca	100 1/4	1.6.3	A
Gs - ma	100 15.7	15.15	- A
Gs m ^a Ca	200 1.	2.2	- A
Wheat Pa	100 1/2	1.11.6	L
Gott ^a R ^o	100 8.4	8.8	- A
Sh. ma	200 8.4	16.16	- A
Gs ma	100 2	2.2	- A
F. ma	100 8.4	8.8	- A
Gs ma	100 2	2	- A
Gs Ca	200 4.2	8.8	- A
Gs La	100 1/2	1.11.6	A
Gs ma	100 1/4	1.6.3	A
Gs Lama	200 1/2	3.3	- A
Gs R ^o	100 1/2	1.11.6	A
Sh ^g R ^o	100 10.5	10.10	- A
Tob ^o La	200 5/	0.10	- A
Gs Ra	200 6.3	12.12	- A
Sh Ra	200 8.4	16.16	- A
Gs ma	100 1	1.1.0	A

F

1915

Ship voyage

23 April Favorite Limeric Liv
 26 -- Freedom Death Liv Antigua
 -- Falmouth -- ~~Liv narva Liv~~
 25 June Do -- narva Liv
 11 July Fanny McLevin Ch' town Liv
 18 -- Flora Baker Jamaica Bristol
 1 Aug Fame Lewis Liv Baltimore
 6 Flora Gaskin Rega Liv --
 " adventure plasket Barbados Liv
 8 Freundschaft - Dantzic Liv --
 22 Favorite Holiday phil^a Liv
 " Active aikin Jamaica Liv
 " augusta Stett Do --
 24 Friede Landeman Dantzic Liv
 12 Sep atlas Whiteside Liv Jamaica
 20 -- Flora -- Virginia Liv
 25 Fair american Liv new york
 Ann. Campbel Tortola Liv
 atlas -- Cork Jamaica

F

on office to

Gs Ra	--	100 3	3 3.0	#
Gs Ro	--	100 8.4	0 0	A
Gs ma	--	100 4.2	4 4	A
Gs La	--	100 4.2	4 4	A
Sty. ma	--	200 8	16 16	A
Gs Ra	--	200 10.5	21	A
Gs La	--	200 4	8 8	A
Gs La	--	300 5.2	13 13	A
Gs Ro	--	100 8.4	0 0	A
Gs La	--	200 2	4	A
Gs La	--	100 8.2	0 0	A
Gs Int ^{ce}	--	500 10.5	52 10	A
Gs Do	--	100 10.5	10 10	A
Gs Ro	--	200 2	4	A
Gs Ra	--	200 6.3	12 12	
Gs Lance	--	100 3	3 3	A
Gs Lance	--	200 4	0 0	A
St Ro	--	100 10.5	10 10	
Gs Ra	--	300 6.3	18 18	

F

1805	Ship	voyage
14 Nov	Favorite	St Tho's Liv
20	Flora	Liv Antigua
	Amity	Younghall Liv
Dec ^r	Fletcher	Liv Dublin
do	Apollo, Gray	Liv Domin ^a
do	Fame Bradshaw	Jamaica Liv
do	Falmouth Little	Liv Granada
do	Fletcher	Liv Dublin Liv
do	Ann Carather	Liv St Lucia
do	Annfield	Liv Jamaica
1	Friends Miss	St Lucia Liv
30	Albion Watson	Liv St Lucia

F

on office Sun pm amt

-	Ep Rodie	200 3 - 6 6.0	A
	Ep Rodie Pa	300 6.3 18 18	-
-	Ep La	200 1/2 3 3	A
-	Ep Ma	200 1 - 2 2	-
-	Ep Ro	200 5 2 1/2 10 10	-
	Ep Pa	100 15.7 15 15	-
-	Ep La	200 5 1/2 10 10	-
-	Ep Ma	200 2 - 4 4	-
	Ep Pa	200 5 1/2 10 10	-
-	Ep Ma	200 3 - 6 6	-
	Ep Pa	100 12.6 12 12	-
	Ep R ^d	200 5 1/2 10 10	-

G

1804 Ship voyage

8 Jan^y Grange, Watson Liv Jam^{ca}
 30 - - George, Jones Liv Africa
 2 Mar Galen Henckley Liv Boston
 19 - - Good Hope - Tortola Havana
 20 - - Grace, Mauld - Liv London
 " - - Gen^l Hunter Kendal Liv Montreal
 21 April Grand Duke - Jamaica Liv
 25 - - George - philad.^a Liv
 8 June Grace - - Liv Londⁿ
 30 - - Grand Duke Jam^{ca} Liv
 4 July George Reynolds Lon. Jam^{ca}
 23 - - Grange, Watson Jam^{ca} Liv
 25 - - Governor Strong Virginia Liv
 3 Aug^t Gen^l Hunter Quebec Liv
 22 Oct George purvis Liv St Thomas
 29 Nov Grace - - Limeric Liv
 15 Dec George Williams Liv New York
 1805 Jan^y Gov^r Gillman New York Liv
 25 Gov^r Strong Liv N. Orleans & back.

G

on offices sum^m amt

Gr - Ma	100	8.4	0	0	-	A
Gr - Ma	100	8.2	0	0	-	A
Gr Ma	100	2	2	2	-	A
Stues Ma	100	3	3	3	-	L 2
Gr. R ^a R ^o	200	1 1/4	2	18	6	A
St - Ma	100	6	6	6	-	A
St - La	100	6.2	6	6	-	A
Gr - Ca	100	2	2	2	-	A
Gr - Ca	100	1 1/4	1	6	3	A
Gr Ca	200	8.4	16	16	-	A
Gr ag ^o	300	6.1	18	-	-	A
St Gr R ^o La	200	8.4	16	16	-	A
Gr La	200	2	4	-	-	A
St Ma	100	7.2	7	7	-	A
St Gr Ma	100	6.2	6	6	-	A
Gr R ^o	100	3 1/2	3	3	0	L
Gr R ^o	100	3	3	3	-	A
Gr R ^o	100	2	2	2	-	A
back. Bott ^a R ^o	100	6	6	6	-	

G

1805 Ship voyage

30 Jan ^y	Glory	Sheppool	Liv	---
2 Feb	Good Intent	Ryeland	Liv	---
14	Grand Duke	Jamaica	Liv	---
	Governor	Carlton	Liv	Novus ^a
18 April	Golden age		Liv	Boston
14 June	Gerwardkeit		Liv	Dantzic
11 July	George purvis	Tortola	Liv	---
27	George Towns		Liv	Virginia
29	Gen ^t Hamilton		Liv	New York
3 Aug ^t	Good Hope			Ipswich Liv
14	Gen ^t Hamilton		Liv	New York
19	Grange Frankl ^d	Jamaica	Liv	---
12 Sep ^r	Gerwardkeit		Liv	Dantzic
25	George Williams		Liv	New York
Oct	Grand Duke		Liv	Jamaica
Nov	Georg ^t Ann	Waterford	Liv	---
Dec ^r	Gen ^t Hunter		Liv	St Lucia

G

on office sum per amt

Gr ⁿ La	100	1	1	1	0	A
Gr ^a Ra	100	1	1	1	0	A
Fr Ra	200	8.4	16	16	0	A
G ^r Ma	100	5	5	5	0	A
G ^r Ma	100	3	3	3	0	A
G ^r Ra	200	2	4	4	0	A
S La	100	10.5	10	10	0	Can ^d
G ^r Ma	200	4.6	12	12	0	A
G ^r La Ma	200	4	0	0	0	A
G ^r Ra	100	2	2	2	0	A
G ^r Ma	100	4	4	4	0	A
G ^r Ra	200	10.5	21	0	0	
H ^r Ra	200	2 1/2	5	5	0	A
G ^r Ma	130	4	5	9	2	A
G ^r Ra	200	6.3	12	12	0	
G ^r La	200	1 1/2	3	3	0	A
G ^r Ma	200	5 1/2	10	10	0	

H

1804

Ship

voyage

4 Jan^y Henry Trotter Lond^a Liv^a ..
 5 . . . Harriette Stamp Lond^a Jam^{ca}
 10 . . . Hamilton Sayers Liv^a Domin^{ca}
 4 Feb^y 7 Hilton Bully Lisbon Liv^a ..
 16 . . . Hamilton Sayers Pork Dom^{ca}
 17 . . . Hebe packet - Liv^a Newry ..
 22 . . . Hope Joy. Liv^a Halifax
 23 . . . Hector Irvin round Mather^{co}
 5 Mar Harold . . . Galway Liv^a
 15 . . . Hope, Higgins New York Liv^a
 20 . . . Hannah, Wilder Ch^atown Liv^a
 5 April Harriette Bullen Barbadoes Liv^a
 7 . . . do . . . do . . .
 17 . . . Horatio . . . Demer^a Liv^a
 5 June Hannah Davis Jamaica Liv^a
 3 July Hamilton, Sayers Domin^{ca} Liv^a
 27 . . . Harriette Bullen Liv^a Barbadoes
 28 . . . Harmony, Barrat^{ine} Limeric Liv^a L^o
 4 Aug^t Hercules Dantzic Liv^a

H

on offices sum pm amt

.. Gs - ma . . . 100 3 - 3 3 - A
 .. Gs - ca . . . 100 8.4 0 0 - A
 .. Gs - Ro . . . 100 7.3 7. 7 - A
 .. Gs - Ro . . . 100 8.4 0 0 - A
 .. Gs - Ro . . . 100 6.3 6 6 - A
 .. Gs - Ra . . . 100 1 1/4 1. 6.3 A
 .. Sh - Ro . . . 100 6. 6 6 - A
 .. G^t - ma . . . 100 15.3 15. 15 - A
 .. Gs - Ra . . . 100 3 - 3 3 - A
 .. Gs - Ro . . . 100 6. 6. 6 - A
 .. Gs - Ro . . . 100 2 - 2. 2 - A
 .. Sh - Ro . . . 100 5.2 5. 5 - A
 .. Gs - Ra . . . 100 5.2 5. 5 - A
 .. Sh - Ro . . . 200 5.2 10 10 - A
 .. Gs - ma . . . 100 10.5 10 10 - A
 .. Gs - Ro . . . 200 6.3 12. 12 - A
 .. Gs - Ro . . . 200 5.2 10. 10 - A
 .. Gs - Ro . . . 100 2 - 2. 2 - A
 .. Gs - Le . . . 200 1 1/2 3. 3 - A

H

1804 Ship voyage
 19 Sep^r Higginson, Callan. Africa W^d
 29 - - - - - ~~Hibernia~~ ~~Hitt~~ ~~am~~ ~~Dantzig~~ Liv
 2 Oct Hebe packet, Liv Newry
 5 Nov Hodgkinson - - - - - Do
 26 - - Highlander - - - - - Sundel^a Dem^{2a}
 18 Dec Hannah Davis Jame^a Liv
 1805

12 Jan Henry, Martin Liv Africa
 15 - - - - - Hunter Kendal Liv Limeric
 31 - - - - - Hope, Connick Liv Dundalk
 11 Feb Hannah Parker Cork Liv
 4 Mar Hawke - - - - - Ligo Liv
 6 - - - - - Hudson - - - - - Liv New York
 7 - - - - - Handlung Liv Varel
 Hope pierce Savanna Liv
 18 Harmony Reid Lhtoun Liv
 Hope mulward Sporto Liv
 23 Higginson St Thomas Liv
 3 April Henry afflick St Lucia Liv
 9 May Hoop - - - - - Dantzic Liv

H

on	offici	sum	pm	amt	
Ep	Ra	200	10.2	21	A
Wheat	Ra	100	7.2	7.7	A
Ep	Ra	100	1	1.1	A
Ep	Ca	100	1 1/4	1 6 3	A
Sh	Ro	200	6.3	12 12	A
Ep	Ro	200	12.4	25	C ^o
Ep	Ro	100	10	10 10	L
Ep	Ro	100	3	3.3	A
Ep	Ro	100	25.7	1.5	A
Ep	Ra	100	1 1/2	1.11.6	A
Ep	Ro	100	2 1/2	2.12.6	A
Ep	ma	200	2	4	A
Ep	La	100	3.7	4 14.6	A
Ep	ma	100	2	2.2	A
Ep	Ro ma	200	5.1	10 10	A
Ep	ma	100	8.4	8 8	A
Ep	Ra	200	6.1	12 12	A
Ep	mas	300	6.3	20	A 200
Ep	Ra	100	2	2 2	A

H

1805

Ships Voyage

11 May	Hamilton	Dundee	Liv
17 June	Highlander	antigua	Liv
	Henry Henderson	Dem ^{ca}	Liv
19	Harriette	St. Lucia ^{Mada} Barbado ^s	Liv
4 July	Hope, Archer	Liv, Ch-town	
11	Harriette	Evrete	St Lucia Liv
15	Highlander	Antigua	Liv
17	Helen Brown	Liv, Staxigo	
24	Henry martin	africa	W. In
20	Hope Archer	Liv Ch-town	
30	Hudson	Liv	New York
1 Aug ^t	Hebe, precio	Dantzic	Liv
20	Highlander	Stevenson	Dem ^{ca} Liv
20 Sep ^r	Hazard	Berick	Dantzic Liv
25	Hebe, precio	Liv	Dantzic
Dec	Hebe, parker	Newry	Liv
	Henry	Liv	St Lucia
	Hers	Virginia	Liv

H

on Africa sum pr amt

G ^r	Ro	200	1	2	2.0	A
G ^r	Sh	Ro	3.4	200	12.5	12 12 - L
-	Sh	Ra	-	100	12.5	12 12 - A
	Sh	Ra	Ro	200	12.6	25 4 - #
	G ^r	Ra	-	100	3	3.3 -
	Sh	La	Ra	200	10.5	20 10 - A
	G ^r	La	-	100	8.4	8.8 - L
	G ^r	Ro	-	120	1 1/2	1.17.9 A
	G ^r	Ro	-	100	15	15 15 - C ^d
	G ^r	Ra	-	100	6	6.6 -
	G ^r	La	Ma	300	4	12 12 - A
	G ^r	La	-	200	2	4 - #
	G ^r	Ro	-	200	3.4	16.16 - A
	G ^r	Lance	-	200	3	6.6 - A
	G ^r	Lance	-	100	5	5.5 - A
	G ^r	La	-	100	1 1/4	1.6.3 A
	Sh	Ma	-	100	5 1/2	5.5 -
	G ^r	La	-	200	4	8 8 -

I

1854 Ship voyage

3 Jan^y Jeannu m^c Dougal Grenock Liv
 14 -- John James Barr Africa W^S
 14 Feb Lane parkins Liv Lubec ----
 16 -- John Adams Liv Boston
 17 -- Indian Trader Liv Jamaica
 19 -- do ---- do ----
 9 Mar Isabella m^c Lonclay Drogheda Liv
 17 -- Julius Conrad, Liv Lubec
 24 -- Isabella m^c Kenley Liv portrush
 26 -- John Bull -- Liv Jamaica
 27 -- Jupiter, parry Liv Bristol
 10 April Ismalinda -- Demer^a Liv ----
 21 do James, Redmayne Jamaica Liv
 25 -- Isabella, Lockart Demer^a Liv
 5 June Johanna Henri^{ta} Dantzic Liv
 " John James Barr Jam^{ca} London
 3 May Isabella Collins Antigua Liv
 Irlam ---- Liv Barbados
 June Jamaica Glegg Jam^{ca} Liv

K

on Offices sum pm amt

wood	Ra	100	1 1/4	1	6	3	A
- Good	Ra	100	10.2	10	10	-	A
- Rum	Ro	100	6	6	6	-	A
- G ^l	Ro	100	2 1/2	2	12	6	A
- Sh	Ra	100	4	4	4	-	A
- G ^s	Ca	100	6.2	6	6	-	A
- G ^s	La	100	1	1	1	-	A
- G ^s	Ra	100	2 1/2	2	12	6	A
G ^s	Ro	100	1 1/4	1	6	3	A
Sh	ma Ra	300	5.1	15	15	-	A
G ^s	Ra	100	1 1/4	1	6	3	A
G ^s	La	200	8.4	16	16	-	A
Sh	Ca	200	6.2	12	12	-	A
Sh	ma	200	5.2	10	10	-	A
Fimb ^{ma}		100	2	2	2	-	A
G ^s	agular	200	10.4	20	-	-	A
G ^s	Ro	100	6.3	6	6	-	A
La		200	5.1	10	10	-	A
freight	Ca ma	200	8	4	16	-	A

I

1804	Ship	voyage
25 June	Jane, Carter	Jamaica Liv
9 July	James, Deonagne	do do
14 do	Jenny & Anna	Liv, Loleraine
17 "	John Adams,	Liv, Boston
21 "	Jane, Hinderson	petersb ^g Liv
23 "	Jane, Carter	Jam ^{ca} Liv
26 . . .	Johanna Florent ^a	Liv Dantzic
27 . . .	John, Treasure	Liv, memel & back
30 . . .	Junge Johan	Liv Flemsbuys
21 Sep ^r	Jenny & Anna	Liv port rusk
22 . . .	Jenny Owen	Bristol Liv
24 . . .	John, Cox . . .	Havanna Liv
1 Oct ^r	Inverness . . .	Killala Liv . . .
8 . . .	John Bull . . .	at sea. Livpsol
27 . . .	Islam . . .	Liv Barb ^s
30 . . .	Isabella Lockart	Bristol Liv ^{am}
5 Nov	Islam . . .	Liv Barb ^s
7 . . .	Juno vizot	Dantzic Liv
15 . . .	Juno Coupland	Liv Barbiced ^{is}

I

on	Species	Sum	pm	amt
Gs	ma R ^o	200	4. 8.	— A
fr	La	100	8.4	8 8 — A
Gs	ma	100	25/	1 5 — A
Gs	ma	200	2	4 — A
Gs	R ^o	200	4.2	8. 8. — A
Rum	Case	180	8.4	15 15 5 A
Ship	R ^a	200	2.	4 4 — A
Ship	ma	200	8.2	16 16 — A
Gs	R ^o	100	2.	2. 2 — A
Gs	La	100	1/4	1 6 3 A
Gs	ma	100	1/2	1 11 6 A
G ^r	R ^o	100	8.2	8 8 — A
Gs	R ^o	100	2/4	2 12. 6 A
Gs	R ^o	200	2	4 4 — A
Gs	R ^a	56	6.1	3. 10. 6 A
Sh	ma	200	5.2	10. 10. — A
Gs	ma	90	6.2	5 13 4 A
Wh	R ^o	100	10.	10 10 — A
Sh	R ^o	100	14.7	14 14 — A

I

1804

Ship voyage

20 nov Irene --- Dublin Liv
 1 decr Jane Davis Liv Larne
 5 --- Josiah Collins Liv New York
 12 --- Isca --- Waterford Liv
 23 ¹⁸⁰⁵ Inverness Cork Liv
 4 Feb John Adams Liv Boston
 James & Catharine Limerick Liv
 Industry --- Lisbon Liv
 Isabella --- Dublin Liv
 4 Mar Islam --- Liv Barbadoes
 8 --- Isabella Leckathuriam Liv
 Islam Liv Barb
 18 John & William Cork Liv
 23 John Treasure Jamaica Liv
 Jane Campbell do do
 30 Juno Agnew Liv Coleraine
 13 April Jane Campbell Jamaica Liv
 --- Juno Coupland Barbice Liv
 15 Emanuel Hunt Kingsport Liv

I

on officers sum per am to

--- Gs Ro --- 100 1 - 1. 1 - A
 Gt Ma --- 100 1 1/2 1 11 6 A
 Gs Ro --- 200 2 1/2 5 5 - A
 Gs Ro --- 100 1 1/2 1 11 6 A
 Gt Ro --- 100 1 1/4 1. 6. 3 A
 Gt Ma --- 200 2. 4 - A
 Gt Ro --- 100 3 3. 3 A
 Gt Ra --- 100 6. 3 6. 6 A
 Gt Ra --- 100 1. 1. 1. 1. A
 Gt La --- 200 4. 8. 8 A
 St G Ro --- 200 7. 4 14 14 A
 Gt Ma --- 100 5. 5. 5 A
 S Ra - average 100 1 1/2 1 11 6 A
 S Ma - 1585 200 8 4 8. 8 A
 S Ro --- 100 8 4 8. 8 A
 Gt Ro --- 100 1 1/4 1. 6. 3 A
 Gt Ro --- 100 15. 3 15. 15 A
 Gt Rama 200 15. 3 31 10 A
 Index Gs Ro --- 100 2 2. A

K

1804	Ship	voyage
24 Feb 7	Kingsmill	Liv Barbadoes
27	do	do
17 apr	Ketton, Gladson	Jam ^{ca} Liv
14 July	do	do
18 Sep	Hatty, Curry	Liv Limeric
25 Jan ¹⁸⁰⁵	Kingston	Sherridge Cork St ^o Vins
23 Mar	Hatty, Currie	Liv Limeric
3 Apr	Kelly	Liv Belfast
18 May	Ketton, Gladstone	Jamaica Liv
14 Aug	Clifton, Bateman	Liv Jamaica
19	Burlew	St ^o Peters b ^o Liv
20	Christopher McGea	St ^o Kitts Clyde
	Calidonia	Jamaica Liv
23	Ceres, Wisner	Liv Dantzic
24	Copernicus	mask Dantzic Liv
21 Sep	Curwin, Shepherd	St ^o Vins ^t Dub ^l
	do	do do
25	Charles, Lewis	Liv portland
27	Charles, Johnson	Liv Jamaica
27 Oct	King George, Caffey	Jam ^{ca} Liv

K

On.	Office	Sum	from	amto.
Gs	La Ro	200	5.2	10.10 - TR
Gs	Ra Ma	200	5.2	10.10 - TR
Gs	Ra	100	6.2	6.6 - A
Gs	Ra	175	8.4	14 - A
Gs	Ma	145	3	4 11.4 - A
Gs	Ma	200	5.2	5 - A
Gs	Ma	100	2 1/2	2 12.6 - A
Gs	Ra	200	1	2 2 - A
H	Ro	200	12.6	25 4 - A
Sh	Ra	200	6.3	12.12 -
Gs	La	200	2	4 - A
Gs	Ro ² La	300	7.3 1/2	21 -
Gs	Ro	200	10.5	21 - A
Gs	Ro	100	2	2 -
Gs	La	200	2	4 - A
Gs	Ro	100	10.5	10.10 - L
Gs	Ro	200	10.5	20 - L
Gs	La	100	3	3 3 - A
Sh Gs	Ma	200	6.3	12.12 -
Office	Ins ^{ce}	140	14.6	20.12 - A

K

	Ships	voyage
1805		
14 Nov	Cambridge Cornwall	Catterell, Jam ^{ca} Lis Jamaica
Dec ^r	King George	Lis Antigua

K

on	offices	am ^t	pm	
Lis	Gt. Rawson	200 15.7	31 10.	—
	W. Ra	200 6.3	12 12.	—
	Gt. Rodie	200 5 ¹ / ₂	10 10.	—

L

1804

Ship voyage

4 Feb^y Lady Hobbsart, Loughton round
 10 do Lord Rodney Carlisle Africa W^s
 2 Mar. Leo, Coupland Liv Demer^a Liv
 5 apr Lady andover Blakeney Cork
 14. Liberty Lands Liv Bahamas
 8 June Lord Forbes Sidde Jamaica
 25 - Lady Crimone Antigua Liv
 30 - Leo, Coupland Dem^a Liv
 27 July Latona, Seger Liv Stettin
 27 Sept Lagan - Liv Belfast
 22 Oct Leo, Derbyshire Liv Jamaica
 5 Nov Lord Forbes Surinam Liv
 10. Do do
 17. Loyalty - Demer^a Liv
 1805
 25 Jan^y Liv packet Liv New York
 6 Feb^y Liv. packet do do
 4 March Liverpool Lpool Phila
 18 Lord Stanley Jamaica Liv
 23 Lucy & Elizabeths Liv Savanna

L

on Official Sum^m amt^o

gb	La	Ru	200	15	31	10.0	L70	
gs	ma	---	100	8	8	8	- A	
sh	ra	---	100	10.4	10.10	---	A	
gr	ro	---	100	3	3	3	---	
gs	ca	---	100	6.2	6.6	---	A	
sh	ma	---	200	6.2	12	12	---	
gs	ro	---	200	6.3	12	12	---	
fr	ca	---	200	6.3	12	12	---	
gs	ca	---	200	2	4	4	---	
gs	ca	---	150	1	1	10	---	
gs	ma	---	200	8.4	16	16	---	
sh	ro	---	200	8.4	16	16	---	
---	sh	ma	---	100	8.4	8	8	---
---	Cotton	ro	---	200	10.5	21	---	
---	gs	ma	---	164	2	3.5	7	
---	gs	la	---	200	2	4	---	
---	gs	la	---	200	2	4	---	
---	sh	ma	---	200	8.4	16	16	
---	gs	ma	---	100	2	2	2	

L

1805 Trip voyage

11 April	Lord Nelson	Surinam	Liv
24 do	Leo. Derbyshire	Jamaica	Liv
4 May	Laura Newton	New York	Liv
1 June	Leo Derbyshire	Jamaica	Liv
25 -	Lucy Wilson	Barbadoes	Liv
26 .	Laura Newton	Liv N York	
6 July	Liverpool packet	Liv Do	
11 -	Lady Hood	St Vincent	Bristol
15 -	Lady St John	St Lucia	Liv
18 -	Lightfoot Watson	Jamaica	Liv
30	Lucy & Elizabeth	Liv Savanna	
1 August	Lauffer Voff	Liv Bellaw	
8	Lady Cremorne	Antigua	Liv
14	L'Amitie	Dantzic	Liv
22	Lady Forbes	Jamaica	Leith
28 Oct	LaFortuna	Liv Lisbon	
31 -	L ^d Melville	Clyde	Antigua
Nov	Lucy Wilson	Liv	St Lucia

L

Geo -

Ship	La	100	15.3	15	15	A	
100 R ^o	Gs	Ra	200	15.7	31	10	A
	Gs	R ^o	200	2.	4		A
	Gs	Ra	100	15.7	15	15	A
12 & 10	Gs	R ^o	200	12.2	12	12	A
	Gs	Ra	200	2	4		A
	Gs	R ^o	200	2	4		A
	Stf.	La	200	10.5	21		A
	Gs	ma	166	8.4	13	10	A
	Gs	R ^o	100	10.5	10	10	A
	La	La	200	3	6	6	A
	Gs	La	200	3	6	6	A
	Gs	R ^o	200	8.4	16	16	A
	Gs	La	100	2.	2		A
	Gs	ma	250	10.5	26	5	A
	Gs	La	200	10	10		A
	Gs	La	200	8.2	16	16	
	Gs	La	100	7 3/4	7	7	

M

1804	Ship	voyage
6 Jan ^y	Mercury, Wood	Tortola Liv
8	M ^t Vernon	Liv Baltimore
	Mary Every	Liv Boston
13	Mercury, Stilt	Whaven Jam ^{ca}
	Manchester Hall	Liv New York
23	Mary Ellen, Amp	Kavanah Liv
24	Mary Hill	Leibon Iporto
27	Minerva, Callagan	Javanah Liv
30	Mary McFarlane	Liv Lond ^y
6 Feb	Margaret Young	rounds
7	Mars, White	Barb ^d Ch-town
18	Mary Ann, Walker	Liv L-Derry
22	Mary Campbell	rounds ^{Liv} Livingston ^{Co}
	Minerva Toulson	Liv Wm
27	Mary Oswald	London Liv
7 Mar	Margaret Wmms	Liv Bristol
13	Maxwell, Edwards	Liv Barbados
26	Mary, Lotman	Ipswich Liv
3 April	Mary Ann	Barbados Liv
7 do	do	do

M

on	offices	sum	pm	amts
Wood	R ^o	100	0.4	0 0 - A
Es	Ma	100	3	3 3 - A
Es	La	100	3	3 3 - A
Ship	La	100	7.3	7 7 - A
Es	R ^o	100	3	3 3 - A
Ship	R ^o Ma	200	10.5	20 - C ^d
Coma	La	100	8.4	8 0 - A
Cotton	Ma	100	3	3 3 - A
Es	Ra	100	1/2	1 11 6 A
Es	Ra	100	15	15 15 0 A
Es	R ^o	100	4	4 4 - A
Es	R ^a	100	1/2	1 11 6 A
Es	R ^o Ra Ca	300	12	37 16 07 A
Es	Ca	100	6.3	6 6 - A
Sh	R ^o	100	3	3 3 - A
Es	R ^a	100	1/4	1 6 3 A
Sh	La	150	3	4 14 6 A
Es ^a	Ra	100	3	3 3 - A
Sh	R ^o Ra	100	5.2	5 5 - A
	Ra	100		5 5 - A

M

1804	Ships	voyage
	Mary Melchett	round
12 April	Mary, White	Liv. Angola
23	Mary, Harrow	New York Liv
25	Mercury, Bume	Havana Liv
16 June	Mary Ellen, Jump	D ^o
26	Mary, Richards	plymouth Liv
24 July	Mary Ann, Derbysh ^{ca}	Dom ^{ca} Liv
25	Minerva, Callagan	Liv Savannah
26	Macclesfield	^{St. J. Taylor} Africa W ^{ca} Jn ⁿ
30	Manchester Hall	Liv New York
3 Aug	Maryford	Liv pernan Liv
18 Sept	Maria, Williams	Liv phil ^a
22 Oct	Mary Ann	Liv Barb ^s & back
14 Nov	Mary Anne Wallis	London
22	Magnolia	Liv Newry
20 Dec	Mayville	Liv phil ^a
26	Mary-Ann Parker	Liv Dom ^{ca}
1805		
10 Jan	Macclesfield	Ch'town Liv
12	Mary Oswald	Jam ^{ca} Liv

M

on	office	sum	pm	amts	
G ^s	ma	100	-	15	A
G ^s	La	100	6.1	6.6	A
G ^s	La	100	8	8	A
S ^o J ^o way	La	100	10.2	10	C ^o
G ^s	ma	100	8.2	8	C ^o
G ^s	R ^o	200	1 1/2	3	A
G ^s	R ^o	200	3.4	16	A
G ^s	ma	200	2	4	A
G ^s	La	200	10.2	21	A
G ^s	La	150	2	3	A
G ^s	La	100	10.4	10	A
G ^s	La	200	2	4	A
Sh	R ^o , La	200	15.4	31	A
Liv	G ^s R ^a	100	3 1/2	3	A
G ^s	Ra	100	1 1/4	1	A
Copper. G ^s	R ^o	100	2 1/2	2	A
	R ^o	200	5.50	10	A
G ^s	La	200	6	12	A
G ^s	R ^o	200	12 1/2	25	A

M

1805

Ship's voyage

Jan	Missippi	Hoylake Liv
	Merchant	Ch town Liv
21	marion & Ann	Drogheda Liv
	maria Guffek	Waterford Liv
	Mary Johnson	Havanah Liv
24	Minerva	Litts Jamaica Liv
8 Feb	Martha Bland	Liv Virginia
11	Mars, Roger	Liv New York
	Mary Temple	Lisbon Liv
8 Mar	May, Smith	Surinam Liv
12	Merchant	Liv Boston
29	Mary, Oswald	Cork Tam ^{ca}
3 April	May, Smith	Africa W In
13	Minerva	Barbice Liv
23	Mary Mitchell	Barbados Liv
30	Mary Goodrich	Baltimore Balt ^m
2 May	Mercury	New York Liv
16	Maddison	New Orleans Liv
18	Martha Johnson	Antigua Liv
25	Margery & Mary	St Vincent Liv

M

No

Cotton	Lane	200	15/8	1.11	6	A
Do	Rodie	100	2	2.2		A
Gs	Lane	100	1/4	1.6	3	A
Gs	Do	100	1/2	1.11	6	A
Shd Gs	Rodie	200	10.2	21		C
Gs	Ra	100	12.6	12	12	C
Gs	ma	200	2	4		A
Gs	ma	175	2	3	10	A
Gs	Ra	100	6.3	6	6	A
Sh	Ra	200	6.3	12	12	A
Gs	ma	200	2	4		A
Gs	Ra	200	3	6	6	A
Gs	ma	100	12.2	12	12	A
Gs	Ra	100	15.3	18	18	A
Gs	Ra	100	15.3	15	15	A
Gs	Ra	100	4	4	4	A
Gs	Ra	200	2	4	4	A
Gs	Ra	100	4	4	4	A
Gs	Ra	200	10.5	21		L
Gs	Ra	200	12.6	25	4	A

M

1855

17 June Mary Brown New York Liv
 19 - Mary Anne Thomp^r Barbado^s Liv
 20 - Montezuma - Africa Ch^r Town
 24 - Mary Shapley Plymouth Liv
 12 July Mary Ann - Parker Dom^{ca} Liv
 15 Malvina - - - - - Granada Liv
 29 - Mary Reid - Liv New York
 1 Aug^t Merchant, Lanthin Liv Boston
 19 Mary, Lam Dartmth Liv
 22 Martha Brae Jam^{ca} Bristol
 Mary - - - - - Jam^{ca} Glasgow
 26 Mary, Rice Grenock Savanah
 7 Sept Maxwell, Edwards Barbadoes Liv
 14 Nov Maria Price Africa W^m
 20 Mary - - - - - Waterford Liv
 Dec Mary Ann Parker Liv Dom^{ca}
 Do Mentor - - - - - Liv Dublin
 Mary Scott Solway Brith

M

G ^r	Ro	---	200	2	4	11	---	---	Cap
H	Ro	Ra	200	10.2	21	4	11	---	A
G ^r	La	---	250	0	16	16	---	---	Cap ^o R
G ^r	La	---	200	2	4	4	---	---	#
G ^r	Ro	---	200	8.4	16	16	---	---	A
G ^r	ma	---	200	8.4	16	16	---	---	A
G ^r	La	Ma	200	4	0	0	---	---	A
G ^r	ma	La	300	3	9	9	---	---	A
G ^r	La	---	300	2	6	11	---	---	A
G ^r	ma	---	250	8.4	21	11	---	---	A
G ^r	ma	---	250	8.4	21	11	---	---	A
G ^r	La	---	200	4	0	0	---	---	A
Hd ^r	La	---	200	8.3	16	16	---	---	A
G ^r	ma	---	100	10	10	10	---	---	---
G ^r	Ro	---	200	1 1/2	3	3	---	---	---
G ^r	Ro	Ra	200	5.2 1/2	15	15	---	---	---
G ^r	La	---	100	1	1	1	---	---	---
G ^r	La	---	100	1 1/4	1	6	3	---	---

N

1804

Ship

voyage

4 Jan^y Nile, Fisher Dem^{ca} Liv
 10 & 17 new active - Liv, Dublin
 18 feb nicholson, pearson Round Head
 7 mar Neptune, Davidson Liv, Belfast
 8 . . . Nancy, privity Southampⁿ, Liv
 9 . . . Nancy, Hobb^s Savannah, Liv
 10 april Neptune, Marshall Botk, Jam^{ca}
 17 . . . nelly Jones - Liv Lucee
 18 . . . Mercur - - - Jam^{ca} Liv
 23 . . . Do . . . Do
 May Nancy . . . St Vine^{ts} Liv
 24 July Do . . . do . . .
 . . . febr Norfolk, Parker Lon. Jam^{ca}
 26th Neptune, Davidson Liv Belfast
 19 Nov^r Neptune, Henry Jam^{ca} Liv
 29 . . . Nancy . . . Waterford Liv
 1805
 12 Jan Neptune Hartly Jam^{ca} Liv
 2 mar Mercur - Jamaica Liv

N

on offices sum por amt

Cotton	La	100	10.5	10	10	-	A
.. Gs	ma	200	1	2	2	-	A
.. Gs	Ba	200	12	25	4	-	A
Gs	Ra	100	25	1	5	-	A
Flour	Ro	100	2 1/2	2	12	6	A
.. Cotton	Ro	100	2	2	2	-	A
Gs	J ^{ca}	82	4	3	8	0	L
Gs	Ro	100	4 1/2	4	4	-	A
.. th	Ra	100	6.2	6	6	-	A
.. th	Ra Ro	200	6.2	12	12	-	A
Gs	Ro	100	4.0	4	4	-	A
.. th & F	Ro	100	8.4	8	8	-	A
Gs	agr	200	8.4	16			A
Gs	Ra	200	1	2			A
.. Cotton	Ro	200	6.2	12	12	-	A
Gs	Ra	100	1 1/2	1	11	6	A
.. Gs	ma	120	12.4	15	2	2	A
Gs	Ra	200	8.4	16	16	-	A

N

1855 Ships Voyage

3-april	Neptune	Savannah Liv
13	Mercus	Cork Jamaica
1 May	New Success	Clare Liv
7 June	Nancy. patten	Limeric Liv
22	Newton Riley	N Orleans Liv
13 July	Nelson. Haly.	Barbadoes Liv
3 aug	North Star	Liv newfound
19	Nancy. Welles	St Peters 69 Liv
20	Neptune m ^{rs} Fee	Demerara Liv
24	Nord Sterne	Liv Dantzic

N

on office sum pm amt.

Gp	ma	100	2	2	-	A
Sh	Ra	200	7.	14	14	A
Gp	R ^o	100	3	3	3	A
Gp	R ^o	100	3	3	3	A
Gp	R ^o	100	5	5	5	A
Gp	La	200	8.4	16	16	A
Gp	Ra	100	5	5	5	A
Tallow	Gp Ro	400	4.2	16	16	A
Gp	Ra La	200	6	12	12	A
Gp	Ro	100	3	3	3	A

0

1864 Ship voyages

20 Feb^r Otter, Lofton round / kitchen
 12 March Olympus Ch town Liv
 9 April D^o Liv phil^a
 7 Augt Oberon Roloff Dantzii Liv
 1865
 5 Feb Orion waterford Liv
 7 Mar Oliver, ailswork Liv, new York
 18 Apr Olive, Richards Liv Baltimore
 8 July Olive, ailswork Liv new York
 15 . . . Olive, Gilchrist Limene Liv

0

on offices sum prn amt

on	offices	sum	prn	amt	
Ep	Ra	100	12	12	12 - A
Ep	R ^o	100	2	2	2 - A
Ep	Ca	100	2	2	2 - A
Wh	Ca	200	2	4	4 - A
Wh	La	200	1/4	2	12 6 A
Ep	Ma La	300	2	6	6 - A
Ep	ma	200	3	6	6 - A
Ep	ma R ^o	200	3/4	7	7 - A
Ep	ma	100	2 1/2	2	12 6 A

P

1854 Ship voyage

5 Jan^y Peggy & Mary, Cook Liv --
 13 -- Providence, Leming Whaven Lane
 14 -- Port au Prince Africa W In
 11 Feb Polly, Blake Jamaica Liv
 13 ... Princess Amelia Demerara Liv
 14 ... packet, Trott Liv Boston
 20 -- Patty, Joy -- Liv Do --
 13 Mar Pott, Mentree Antigua Demer
 26 -- Providence, Gahoga Limerick Liv
 13 June perseverance, Good round ^{5 Newton}
 27 -- President, Ince Barbados Liv
 4 July Penelope Lon. Jamaica
 13 -- packet, Trott Liv Boston
 31 -- Perseus, Proctor Tortola Liv
 17 Nov Providence success Bantze Liv
 " -- Ptolemaeus -- do do --
 23 perseverance Waterford Liv
 26 Prince William Hawanah Liv
 5 Dec Princess of Wales ^{Queen} London Jam ca

P

on offices sum fm amt

Butter Ro -- 100 1 1/2 1 11 6 A
 Gs ma 100 1 1 1 -- A
 Gs Ra -- 100 10 2 10 10 -- A
 Gs Ca Ra 200 10 5 21 -- A
 Sh. Ro ... 200 8 4 16 16 -- A
 Gs ma La 300 2 1/2 7 17 6 A
 Gs ma -- 100 2 2 2 -- A
 Gs Ro Ra 200 10 4 21 -- A
 Gs Ca -- 100 3 3 3 -- A
 Com^m Ma -- 100 15 15 15 -- A
 Gs Ro -- 200 6 3 12 12 -- A
 Gs agr 300 6 1 18 -- A
 Gs Ca -- 200 2 4 -- A
 Gs Ca -- 200 3 6 6 -- A
 Gs Ra -- 100 10 10 10 -- C.³
 Gs Ro -- 100 10 10 10 -- A
 Gs Ro 100 1 1/2 1 11 6 A
 S & Gs Ro 200 10 21 -- A
 Gs Ma -- 200 8 4 16 16 -- A

P

1805

Ship voyage

25 Jan^y perseverance Demer Ch town
 2 Feb packet, Trott Liv Boston
 8 — princeps amelia Dominica Liv
 16 — perseverance Ch town Liv
 15 April perseverance Good Do Do
 1 May Phoenix Wright New York ^{Liv} Havana
 15 June pitt Sharp nevis Liv
 — plover — Jamaica Liv
 18 July pitt, Campbell Do Grenock
 27 Polly, Taylor Liv Africa
 — packet, Trott Liv Boston
 17 Augt phanix Albrecht Dantzic Liv
 20 — posthumous — Jamaica Liv
 21 post packet Ipswich Liv
 22 pitt, Smith Jamaica London
 23 — pomona, Allen Liv Boston
 Dec penkith — Liv Sandwich

P

on offices sum pm amt

Com ⁿ	ma	100	8.	0.	0.	A
Gs	Ro	200	2	4	—	A
H	Ro	200	6.1	12	12	A
Gs	Ra	100	2.	2.	—	A
Gs	ma	200	8	16	16	A
Gs	Ro	100	8.2	0.	0.	A
F.	La	100	15.7	15.	15.	A
Gs	Ro	100	15.7	15.	15.	A
Gs	Ra	200	10.5	21.	—	A
Gs	La	100	6.	6.	6.	—
Gs	Ma ² La	300	3	9.	9.	A
Wheat. Ship	Bedie	300	2.	6.	—	A
Gs	Ra	200	10.5	21.	—	A
Gs	Ro	200	2.	4	4	A
Gs	Ma	250	10.5	26	5.	A
Gs ² Ro	La	300	3	9.	9.	A
Gs	La	100	11.	1	6.3	—

1804 Ships voyage

8 Feb. Queen Tyrer Demerara Liv.
 14 April Queen of Naples, Limeric Liv.
 1805
 19 Augt Jupiter, ^{or Effling} ~~Sty~~ man Dantzic Liv
 23 - Isabella Queen Liv Ch-town
 12 Sep^r Jane, Anderson St. Petersburg Liv
 25 - John ~~Lucas~~ ^{Woodhouse} Liv Jamaica
 James Beathaw Liv Do
 The Increase - Waterford Liv

on officers sum pm amt

on	officers	sum	pm	amt
Sh & Es	Ro	200	8.4	16 16 - A
Es	Ro	100	2 1/2	2.12 6 A
Es	La	200	2.	4" - - A
Es	La	100	4	4.4 - A
Es	Ro	100	4.2	4.4 - A
	Ma	200	6.3	12.12 -
	In Ra	200	6.3	12.12 -
	La	200	1 1/2	3.3 -

R

1854

Ship

voyage

2 Jan'y Rolla, Hutchinson Ch-town Liv
 19 -- Ruth & Mary - Liv Phil^a
 27 -- Richard Perrin Virginia G. B
 17 Feb 7 Royal Recovery Liv Belfast Liv
 " " Royal Edward Liv St Lucia,
 24 -- Resolution -- Bidge water Liv
 27 Royal Edward Liv St Lucia
 19 Mar Rachel & Lucy Limeric Liv
 May Rigby, Williams - Demer^a Liv
 3 June Robert, Derbyshire Jam^{ca} Liv
 22 -- Royal Recovery Liv Falmouth Liv
 25 -- Rodie, Dawson Antigua Liv
 4 July Robert, Aylward Londⁿ Jam^{ca}
 23 -- Richard, Ridley, Narva Liv
 27 -- Robert, Derbyshire Jam^{ca} Liv
 28 -- Rolla -- Liv, Ch-town
 31 -- Reliance Harvey Tobago Lond
 8 Oct Richard Perrin W^h Indies Liv
 22 Robert Johnson Liv Jamaica

on offices sum pm amts

Gs - R^o ... 200 3- 6 6 - A
 Gs ma ... 200 3 6 6 - A
 Ship R^a R^o 200 8.2 16 16 - A
 Ship ma ... 100 3- 3 3 - A
 Gs - ma La 200 6.3 12 12.0 A
 Gs - R^a ... 100 1 1/2 1. 11. 6 A
 Gs R^o ... 100 6.3 6. 6. - A
 Gsⁿ R^o ... 100 3 3. 3 - C²
 Sh - R^o ... 100 10.5 10 10. - A
 Gs - R^a ... 200 0.4 16 16 - A
 Sh ma 100 4 - 4. 4. - A
 Gs R^o 200 6.3 12. 12. - A
 Gs agr 300 6.1 18 - - A
 Deals Ca - 100 4.2 4 4 - A
 Gs Ca 120 8.4 10. 3. 6 A
 Gs R^a 100 2- 2. - - A
 Gs R^o - 200 7.3 14. 14 - A
 Sh R^o - 200 15.7 31 10 - A
 Gs ma 200 0.4 16 16 - A

R

R

1804

10 Nov Rodie Dawson Cork W In

" " Royal Recovery Liv Waterf^d22 Dec Racehorse - Londⁿ Barbic

1805

12 Jan Robert Johnson Jamaica Liv

15 Mar Richard Brockley Lisbon Liv

" April Robert Johnson Jam^{ca} Liv

28 Racehorse - Barbic Lon.

15 June Rhoda & Betty Liv New York

4 July Resource moffat Ch^town Liv

" " Rein Deer - Liv Bonney

26 Richard Perrin Jam^{ca} Liv

28 Ruby Toole Liv Apica

29 Rose, Tonkin Liv phil^{ad} Del^{pa}9 Aug^t Rose Hathaway Do20 - Rosanna Brown Liv phil^{ad} Del^{pa}

22 - Robert Derbyshire Liv Jamaica

24 Rodie Dawson Antigua Liv

Rella Hutchⁿ Liv Ch^townG^s R^o - - 200 5 2 1/2 10 10 - AG^s La 100 1 1/2 1 11 6 AG^s La - - 100 6 3 6 6 - A

fr Ma 200 3 4 16 16 - A

G^s Ra 200 6 3 12 12 - AG^s Ra - 100 15 7 15 15 - AG^s Ma - 100 10 5 10 10 - AG^s La - 200 2 - 4 - - ACotton² La ma 300 8 25 4 - AG^s La - 100 8 2 8 8 - A

Sh Ra - 100 15 7 15 15 - A

G^s R^o - 100 6 6 6 -G^s La - 100 4 4 4 - AG^s Ma - 100 4 4 4 - AG^s La - 100 4 4 4 - AG^s Ma - 200 7 3 1/2 14 14 -F R^o - 200 8 1/2 16 16 - AG^s R^o - 200 4 8 8 - A

R

R

1805

Ship voyage

Sep ^r 7.	Romulus Toop	Lie Memel
Oct 28	Richard Perrin	Jamaica Lier
Dec	Rose Hathaway	Phil ^a Lie -
	Rose	Limerick Lie

R

Hc -

Ship	Lance	200 2 1/2	5. 5. 0	A
Fr	Lance	200 14. 6	29. 0. -	A
Ep	Ma	200 4	0 0 -	A
Ep	Ro	100 3. 3. 3	-	

S

1804

Ship voyage

3 Jan^y St Marys planter Liv Jamaica
 7 --- Sally, Rees - Liv Limeric
 " --- Sally, Hodson Liv Dublin -
 26. Sally & Rebecca. Grenada Liv
 28. Sarah Lightfoot Bristol Jamaica
 7 Feb Supera Bovin Liv Jamaica
 " Sarah Sellars Africa W I
 13 --- Swift Roberts round.
 18. --- do - - - - - do - - - - -
 12 March Shannon - - - - - Liv Quebec
 19. --- Ships of war - Jamaica Londⁿ
 April Shaw Dawson Liv Dublin
 1 May Ships of war Jam^{ca} G^t B. "
 5 June Saturnus - - - - - Memel Liv
 " --- Spencer, Robt Jamaica Londⁿ
 May Tophy - - - - - St Vincents Liv
 12 June Solid - - - - - Limeric Liv
 21 Ship or Ships, Statham, phil^a Liv
 19 July St Marys planter Jam^{ca} Liv

S

on Offices - sum pm amt^o

Ship R^a - - - 100 4 - 4 4 - A
 G^s - R^o - - - 100 4 - 4 4 - A
 - G^s - Ma - - - 100 1 - 1 1 - A
 Cotton R^o - La 300 8.3 25 4 - T
 G^s - La - - - 100 4 - 4 4 - A
 H^h - R^a - - - 200 4 0 0 - A
 - G^s - La - - - 100 10 10 10 - A
 G^t - Case - - 100 18 18 18 - A
 G^t - do - - - 100 18 18 18 - A
 Rum R^o - - - 100 6 6 6 - A
 Specie La - - 200 2 4 4 - A
 G^t - Ma - - - 100 1 1 1 - A
 for R^o Ward Specie R^o 200 2 4 4 - A
 Temb^r Ma 100 2 2 2 - A
 G^t - Aquilae 200 11.4 22 - - A
 H^h - G^s - R^o 200 8.4 12 12 - A
 G^s - R^o - - - 100 2 1/2 2 12.6 A
 Dalk^r - Ca - - 100 2 - 2 2 - C^o
 Ra 200 8 16 16 - A

1804	Ship	voyage
21 July	Sally, Grew	Liv Baltimore
27 ---	Solid, Musdell	Liv St Lucia
30 ...	South Carolina	Liv, Phil ^a
31 ...	Successful Nancy	Whaven Dublin
6 th Aug ^t	Sally, Webber	Liv Boston
"	Sarah, Gill	petersb & Liv
7 ...	Satisfaction	Elseneur Liv
24 Sep ^r	Sally, Hodgson	Dublin Liv
3 Oct	Ships, Whitehaven	Lond ⁿ ---
13 -	Lampson	Liv Dublin
15 ...	Speedwell	Jamaica Liv
16	St Andrews	Ch-town Liv
20 ...	Sally, Smith	Liv Boston
27	Ship or Ships	Jamaica Liv
Nov ^r	Swift, Roberts	Havanah Liv
9 -	Sparrow	New Orleans Liv
20	Ship or Ships	Bolton Dem ^{ra} Liv
23	Ship or Ships	Waterford Liv
24	Do	Whitehaven Liv

on	office	sum	prn	amt	
Qs	ma R ^a	200	2	4	- A
Qs	R ^o	200	5.2	10	10 - A
Qs	La	200	2	4	- A
4 Liv	St Qs La	200	2 1/2	5	5 - A
	Qs R ^o	200	2	4	- A
	Qs La	200	4.2	8	8 - A
	Deals R ^a	100	4.2	4	4 - A
	Qs Ma	200	1	2	2 - A
	Qs R ^o	100	3	3	3 - A
	Qs ma	100	1	1	1 - A
	Qs R ^a	100	15.3	15	15 - A
	Qs R ^o	100	2	2	2 - A
	Qs La	100	3	3	3 - A
	Qs R ^a	100	15.6	15	15 - A
	St Qs R ^a	100	12	12	12 - A
	Qs R ^o	100	12	12	12 - A
	Cotton R ^o	100	12.6	12	12 - Can ^d
	M & S Wheat R ^o	100	2	2	2 - A
	Coffee La	200	1/4	2	12.6 A

S

1804

6 Decr Speedwell High Liv Liverpool
 1805
 10 Jan Solid Beane St Lucia, Liv
 12 Ships of War Jamaica Liv
 Severn way Cork Liv
 18 Sally, Cookson - Preston Dryada
 Ships of War - Jamaica Eng^d
 21 Sally Williams Conway Liv -
 Lignell - Spool Dublin
 12 Mar Ships of War Jamaica London
 Do Do
 Sisters McBride Liv Angola
 15 Ships of War Jamaica G B
 Sampson Liv to Dublin
 1 April Shaw Dawson Dublin Liv
 4 Ships - Belfast Liv
 1 May Swift, King New York Havana
 13 Savage, Delano Liv New York
 0 June Satisfaction Liv per naut

S

Gt La	100 1/4	1	6	3	#
Gt Ro	100	6	3	6	- A
D ^d Ma La	400	2	0	0	- A
Gt La	100 1/4	1	6	3	A
Gt La	100 1/2	1	11	6	A
D ^d Ro	100	2	2	2	- A
Gt Ro	100	1	1	0	A
Gt Ra	100	1	1	0	A
Midgley D ^d La	100	2	2	2	- A
Hardy D ^d Ra	300	2	6	6	- A
L ^d	100	0	0	0	- A
Hardy & Midgley M ^d	400	2	0	0	- A
Gt Ma	100	1	1	0	- A
Gt Ra	100	1	1	0	- A
Gt Ra	200	1	2	2	- A
Gt Ro	100	2	0	0	- A
Gt Ro	200	2	4	4	- A
L ^d Ra	200	2	16	16	- A

Sr

1805

15 June Successful nancy Antigua Liv
 19 - Sir L^o Pellew Barbice Liv
 3 July Sally Ann - - - Liv Boston - -
 4 - Stapleton - - - Savannah Liv
 11 - St Mary's planter Jamaica Liv
 " - Supex. Hall - - - Do - - -
 23 Sara Danburg Gothenb⁹ Liv
 27 Sally Webber - Liv Boston -
 1 Augt Sarah Gill - - - St Peter's⁹ Liv
 3 - St Andrew - Liv Coleraine
 6 - Ships or Trident Domin^{ca} Liv
 9 - Ships Neptune or Lucy St Vincent Liv
 16 Spartan - - - Liv London -
 20 Sally Webber Liv Boston
 14 Sept Ship or Ships Jamaica Liv
 21 - Shannon ^{Curran} Baltimore Liv
 " - Ship or Ships Antigua Liv
 Ship or Ships Surinam Liv
 14 Nov Swift Barbadoes Jam^{ca}

Sr

Ship La	100	15.7	15	15.0	L
--- Gs Ra	200	12.6	25	4	A
--- Gs Ma	200	2	4	0	A
--- Gs Ra	200	2 1/2	5	5	A
--- Hf Ra	300	10.5	31	10	A
--- So Ra	300	10.5	31	10	A
--- Gs La	100	2 1/2	2	12 6	A
--- Gs Ro ² Ma	300	3	9	9	A
--- Gs La	200	4.2	8	8	A
--- Gs La	200	25	2	10	A
--- Gs Ro	200	8.4	16	16	A
--- Gs Ro	200	8.4	16	16	C ^o
--- Gs Ro	200	2	4	4	A
--- Gs La	100	3	3	3	A
Swan Gs Ro	200	10.5	21		A
--- Gs Ro	100	8.2	8	8	A
Turner com Ro	100	10.5	10	10	cut ² 49.10
Robie Cotton Ro	200	12.6	25	4	A
--- Gs Ra	200	5	10	10	A

S

1805

Thurs voyage

14 Nov	Sally, Brown	Liv Porto
16 -	Shipley	Liv Dominica
	St Mary's planter	Liv Jamaica
	Sussex	Do
See	Sarah Lightfoot	Do
	Susanna Hornby	Liv St Lucia

S

on office sum/pm amts

Eg	Lance	100	2.4	0	8-
Gs	Rodri	200	5-	10	10-
th	Ra	200	6.3	12	12-
th	Ra	200	6.3	12	12-
Gs	Ma	200	3.	6	6-
Gs	La	200	5 1/2	10	10-

T

1804

Ship

voyage

2 Jan Thomas, winter Barbice Liv
 10 - Thomas, Drury Waterford Liv
 23 - Thetis, allen Dundock Liv
 27 - Two friends, Galbrath L. Londy
 2 Mar Two pollys - - Liv Boston
 19 Two Brothers ^{and 2} Liv, pictow + back
 17 Apr Thomas, pince Jamaica Liv
 21 Telemon - - - do - - - do
 8 June Triton - Marshall ^{Sittiger} Liv
 19 - Two Brothers Jam^{ca} Liv
 23 - Thomas, pince do - - -
 3 Augt Trigir, Oxtou do - - -
 2 Oct Two Sisters Liv port a ferry
 4 - Thomas, pince Liv, Africa
 9 - Two friends Galbrath Liv Londy
 " - Two Generals Glasgow Liv
 29 nov Trusty, Stevens Youngham Liv
 12 dec Thetis - - - Cork ^{S^t Kitts}
 18th Feb Terry Do Liv

T

on offices sum per amt.

G ^s - Ra	200 8.3	16 16	A
Wheat Ro	100 4	4 4	A
do - Ca	100 1/4	1 6 3	A
G ^s - ma Ra	200 2 1/2	3 13 6	A
G ^s ma	100 2	2 2	A
Sh - La	100 12.2	12 12	A
Sh Ro	200 7.3	14 14	A
F - Ro	100 6.2	6 6	A
Com ⁿ Ra	100 15	15 15	A
G ^s Ro	200 8.4	16 16	A
Coffee Ca	100 8.4	8 8	A
Fruit Ra	200 4	8 8	A
G ^s Ra	124 400 1	1 1	A
G ^s La	150 6	9 9	A
G ^s Ca	100 1 1/2	1 11 6	A
Sh Ra	100 5	5 5	A
Sh La	100 1 1/2	1 11 6	A
G ^s ma	100 50/	2 10	A
G ^s La	200 1 1/2	3 3	A

T

1865

Ships voyage

30 Mar Thomas Dewey Liv Quebec
 23 April Trusty — Yongehall Liv
 4 May Thornley — Lisbon Liv
 10 — Tyson, Hewson Demer^{ca} Liv
 Do — Do —
 1 June Triton Marshall^l St Lucia Liv
 13 July Tyson, Hewson Demer^{ca} Liv
 18 — Tiqu Axton Sam^{ca} Liv
 Do — Do —
 Tom. Barry Liv Riga Liv
 27 — Telegraph — Liv New York
 30 — Telemo Crotch Jamaica Liv
 — Two Brothers Virginia Liv
 3 Aug^t Triton Harrison Liv Tonen^{ca}
 Trident — Domi^{ca} Liv —
 22 — Telamon, Crotch Sam^{ca} Liv
 Thornley — Liv Lisbon
 12 Sep Two Sisters — Liv Lisbon
 16 Nov Telamon — Liv Jamaica

T

V Co

Ep	Rodie	100	6	6	6.0	A
Sh	La	100	11/2	1	6.3	A
Ep	Ro	100	10.5	10	10	A
Ep	Ro	200	10.5	21		A
Ep	Ma	100	10.5	10	10	A
Ep	Ra	200	12.6	25	4	A
Ep	Ro	150	8.4	12	12	A
Ep	Ra	300	10.5	31	10	A
Ep	Ma	200		21		A
Sh	La	100	9.4	9	9	A
Ep	La	200	4	0	0	A
Ep	Ra	150	10.5	15	15	A
Ep	La	200	4	0	0	A
Ep	La	200	5.2	10	10	A
Ep	Ro	100	8.4	0	0	A
Ep	Ra	100	10.5	10	10	A
Ep	Ma	100	0.4	0	0	A
Ep	Ma	100	8.4	8	8	A
Sh	Ra	200	6.3	12	12	A

T

1805

Ships

Boysage

Nov	Tudgar	Li Cork
Dec	Trusty	Younghall Li
	Thomas	Waterford Li

T

HC -

Ep - Lance	200 1/2	3, 3, 0	A
Ep - Lance	100 1/2	1, 1, 6	
Ep - Lance	200 1/2	3, 3, -	A

V

1804

Ship

voyage -

27 Jan^y Volant - - - - - St. John Liv
 10 Feb Venerable Leutas Liv ^{Barbadoes} & ^{St. John}
 19 Mar Venerable Aikin Jamaica Liv
 9 Dec Vine, Hught - - - - - Newry Liv
 29 Mar ¹⁸⁰⁵ Vicissitude Londⁿ Jam^{ca}
 20 May Veranderus - - - - - Dantzic Liv
 17 June Venus, Tozer - - - - - St. Lucia Liv
 11 July Do - - - - - Do - - - -
 16 Sep Venus, Brigg Dantzic Liv
 14 Nov Venus, Tobin Africa W^m
 Venerable Leutas Liv Barbadoes

V

on office sum from amt

Cotton La - - - 100 3 3 3 - A
 Sh La - - - 200 5.1 10.10 - A
 Th - - Ra - - - 200 8.4 16 16 - A
 - Gs Ma - - - 100 1 1/2 2.10.4 - A
 - - Gs Ra - - - 100 6 3 6 6 - A
 Gs Ro - - - 100 2 2 2 - A
 - - Gs Ro Ma 200 12.5 25.4 - A
 Gs Ma - - - 100 10 5 10 10 - A
 Gs Ra - - - 200 2 1/2 5.5 - A
 Gs Ma - - - 100 10 10 10 -
 Gs La - - - 100 5 5 5 -

U

1804

22 March Union Steel Limeric Liv
 " " Uranius Beckman Liv Vazel
 21 April Union Island - Jamaica Liv
 18 June D^o - - - - - D^o - D^o
 20 Sep^r 1805 *Mirica Beata* Gottenburg Liv
 25 June Union Island Jam^{ca} Liv
 30 July Union Gouldson Liv Savannah
 6 Aug^t Uranius Fradon Memes Liv
 Nov Union Evans Liv London
 Dec^r Union Island Liv Jamaica

V

Guin Ra	...	100	3	3	3	-	A
Gs La	---	200	2 1/2	5	5	-	A
F Ra	...	100	6.2	6	6	-	A
Ship Ca Ma	200	8.4	16	16	-	A	
Gs La	---	100	3	3	3	-	A
F Ra	200	15.8	25	15	-	A	
Gs Ra	---	200	4	8	8	-	A
Sh Gs Ra ^r Ro	300	2	6	6	-	A	
Gs La	-	200	2	4	4	-	
Sh Gs Ra ma	300	6.3	18	18	-		

W

1804 Ship voyage

16 Jan⁴ William Heathcot, Liv Demer^a
 5 Mar Woolton --- Liv Demer^a ---
 24 William Duncan Clare Liv ---
 21 April Will. Woodhok Jamaica Liv ---
 5 June Watt Kirkpat Jamaica Liv ---
 " Williamson Rawson Lon. Jam^{ca}
 " Watson Leathes Liv petusby
 8 Watt --- Jamaica Liv ---
 18 Westmoreland ^{oliver} Do Do
 " Winchester Riga Liv ---
 1 Oct^r Warren, Buckley Carnarvan ^{Weymouth}
 20 Woolton --- rounds J. Weston
 22 Watson Lish Sound Liv
 5 Nov Will^m Thompson Demer^a Liv

1805

10 Jan Washington Hoylake Liv
 " Warner --- Antigua Liv
 15 Mar William Harrison Lisbon Liv
 18 Will Braitford Jamaica Liv

W

on officers sum p^{er} amt

- Ship - ma Ca 200 6.3 12 12 - A
 - Th - ma --- 100 5.1 5.5 - A
 - Grain - Ca --- 100 3 - 3.3 - A
 - Sh - La --- 100 6.2 6.6 - A
 - G^s - ma --- 100 4 - 4.4 - A
 - G^s - ag^r --- 200 8.4 16 - A
 - H - R^o --- 100 4.2 4.4 - A
 - fr - ma --- 100 0.4 0 0 - A
 - S^{ty} - Ra --- 200 8.4 16.16 - A
 - G^s - ma R^o 200 5.2 10.10 - A
 - S^{ty} - ma --- 100 2 2.2 - A
 - G^t - R^a --- 200 15 31.10 - A
 - G^s - R^o --- 100 5.2 5 5 - A
 - G^s - R^o --- 100 10.5 10 10 - A
 - G^s - La --- 200 15/9 1 11 6 A
 - G^s - R^o 200 12.3 12 12 - A
 - G^s - R^a 2^m 300 6.3 18 18 - A
 - S^{ty} - G^s - ma 200 8.4 16 16 - A

W

1855

Mar 15 William Penn Liv New York
 23 Washington, American, 1000
 Apr 4 Warner Miller Antigua Liv
 18 Washington Lisbon Algarve
 May 18 Wentworth Gardner Demer Liv
 June 11 Warner Kendal Liv Antigua
 15 Washington - Orleans Liv
 July 11 Watt, Kirkp^k Jamaica Liv
 Westmoreland ^{Bridson} Do
 24 Washington Jersey London
 Sept 20 William Thompson Demer Liv
 Nov 20 Westbury - Domca Liv
 Westmoreland Liv Jamaica
 Watt - Do
 Dec Will^m & Mary Cork Liv
 William Steel Lemire Liv

W

...	Gs	ma	200	2	4	..	A	
...	Solp	La	200	10	21	..	C ^o	
...	Gs	Ro	100	8.4	0	0	..	A
...	Con	Ra	200	25	2	10	..	A
...	Gs	Ro	200	10.5	21	..	A	
...	Gs	Ra	200	10.5	21	..	A	
...	Gs	Ro	100	4	4	4	..	A
...	Solp	Ra	300	10.5	31	10	..	A
...	Do	Ra	300	10.5	31	10	..	A
...	Gs	Ro	200	3.1	6	6	..	C ^o
...	Gs	Ro	200	10.5	21	
...	Gs	Ro	100	5	5	5	..	A
...	M	Ra	200	6.3	12	12	..	
...	M	Ra	200	6.3	12	12	..	
...	Gs	La	100	1/2	1	11	6	
...	Gs	Ra	100	3	3	3	..	

General INDEX

1855

3 May Juno. Coupland Liv Barbice Liv
 Jacobus — Liv Fornsberg
 18 Irton Hecock Gener^a Liv
 Do — Do —
 20 James Brown Nigo Liv —
 27 Juliana Wejner Dantzic Liv
 30 Tabella Lockart Surinam Liv
 3 June Jane Campbell Jamaica Liv
 5 — Zealous — Liv Exeter —
 11 Centurian Dantzic Liv
 19 — John Adams Liv Boston —
 20 Juno malcombi Savannah Liv
 24 Independence Liv Baltimore
 26 Clyde Kellock St Tho' Liv
 28 John, Crofts St Lucia, Liv
 3 July Junge Henrick Liv Stettin
 4 — Jane Campbell Channel Liv
 Cyrus — — do — —
 8 Iris, Smith new York Liv

— Sh Ra R^o 200 15.3 31 10 — —
 Ep Ra — 100 2 1/2 2 12 6 A
 Gs R^o — 200 10.5 21. — C^d
 Gs ma — 100 10.5 15. 10 — C^d
 Gs R^o — 100 2 2. 2 — A
 Gs R^o — 200 2 4. 4 — A
 Gs La — 100 15.2 15. 15. — A
 Gs Ra — 100 15.7 15. 15. — A
 Gs R^o — 100 2 2. 2 — A
 T ma — 100 4.2 4 4 — A
 Gs² La Ma 300 2. 6. — — A
 Gs La — 200 2 4 — — A
 Gs R^o — 200 2 4 — — A
 Gs Ra La 200 10.4 21. — — L
 100 Ra Gs Ma 200 12.6 25. 4 — A
 Gs La — 100 2 2. 2 — — A
 Gs Ra — 186 2 3 17 1 A
 Gs Ra — 100 2 2. 2 — — A
 Ep Ma — 100 3 3. 3 — — A

~~XXX~~
1804

Index -

11 July Charles, Carney Jamaica Liv
 12 . America, Miller Baltimore Robt
 13 Irlam, Keyser Liv Barbadoes
 --- Caston, pauls - Demra Liv -
 15 Cheswick - - Liv Barbadoes
 18 Centurion, Gray Liv wyberg -
 James, Bradshaw Jamaica Liv
 Ann. Murdock Do New York
 22 Ann, Caruthers St Lucia Liv
 23. Iris, Smith. - - new York Liv
 " Alliance, Wickburg Udoewalla Liv
 27 Alexander, Inerarity Jamaica Liv
 John, Reay. - - Liv petersberg
 Catharine, Bacon Arcangel Liv -
 28 Aphrodite - - Dantzic Liv
 Jane McGinnis Liv apica
 1 Augt Isabella Green Liv Ch-town
 3 Julius Caesar - Liv Ch-town
 6 Caroline Ratske Dantzic Liv

Index

~~XXX~~

14f	Ra	300	10.5	31.10	-	A
	Gs Ra	100	8	8	-	C ^d
sailed single	G ² La	300	5	16	16	- A
	G ¹ Ro	150	8.4	12	12	- A
	G ¹ La	200	5.1	10	10	- A
	G ¹ Ma	100	4.2	4	4	- A
	G ¹ Ra	200	10.5	21	-	- A
	G ¹ Ra	240	7	17	12	8 A
	G ¹ La ² Ra	300	8.4	25	4	- A
	G ¹ Ma	100	4	4	4	- A
	G ¹ La	100	2 1/2	2	12, 6	A
	G ¹ Ra Ro	200	10.5	21	-	- A
	G ¹ La	200	5.2	10	10	- A
	G ¹ La	100	5.2	5	5	- A
	G ¹ La	200	2	4	-	- A
	G ¹ Ro	100	6	6	6	-
	G ² La	200	3	6	6	- A
	G ¹ La	200	5.1	10	10	- A
	G ² La Ro	300	2	6	-	- A

Lopes, averages, ~

1797 union Beard - suit in Chy
Henry Tait Jamaica Liv

1798 Oxholme - St Tho Liv -

1800 London - mar^{qu} Lon -
do - Nancy Campbell Liv Jam^{ca}

1802 - Britannia Crown Dep^{ta} Liv
do King Bel - ~~xxxx~~ - - -

1803 Henderson Castle St Tho Liv
do James Comptons ~~xxxx~~ ~~xxxx~~
do James Hughes do Liv
do Annica Silveira Hulo Lubec
do Martha Fletcher ~~xxxx~~ Liv
do Admiral Nelson ~~xxxx~~ Liv
do John Carle Hiden ~~xxxx~~
do Anne ~~xxxx~~ ~~xxxx~~ ~~xxxx~~ Liv
do ~~xxxx~~ - to be cancelled
do Sally Thomas ~~xxxx~~ Liv
do ~~xxxx~~ ~~xxxx~~ ~~xxxx~~
do ~~xxxx~~ do -

1804 Beaver round

~ doubtful - and unsettled

Goods for Hinde - captured, Ra Fla 200 -

G^l for Botton. do - Ra Cras 200 -

Goods - stranded Ma - 100 -

Goods - damaged La - 60 -

Sh. for J. Dutton Fiviated Wilson ~~xxx~~

Sh. for Kitchen detained Ro ma 200 200

G^l for Faulkner Loft - Ca 100 100

G^l ~ ~ Ro 100 100

G^l ~ ~ stranded Ro ~~100~~

G^l ~ ~ do Ra 100 69

Timbu do Ro 100 80

G^l for France - Lost - ma 100 50

Goods - - - ~~xxxx~~ ~~100~~

Sh. G^l not S.W. com^o 2a 100 20

~ ~ ~ ~~xxxx~~ 80

G^l - - - mppen Ro ~~100~~

G^l - - - Lost La 100 87

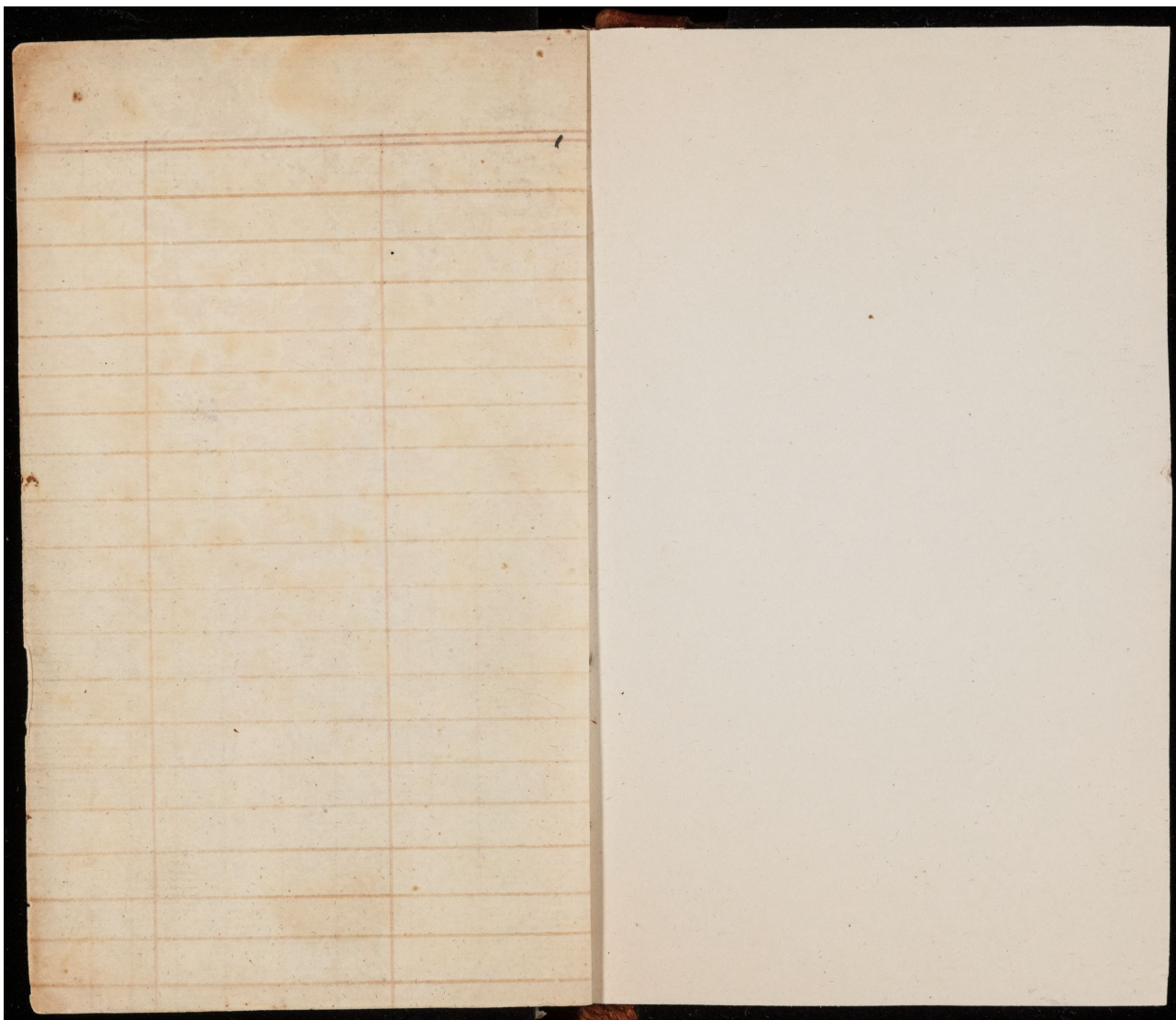
G^l cap^o & recep^o Ra 100 40

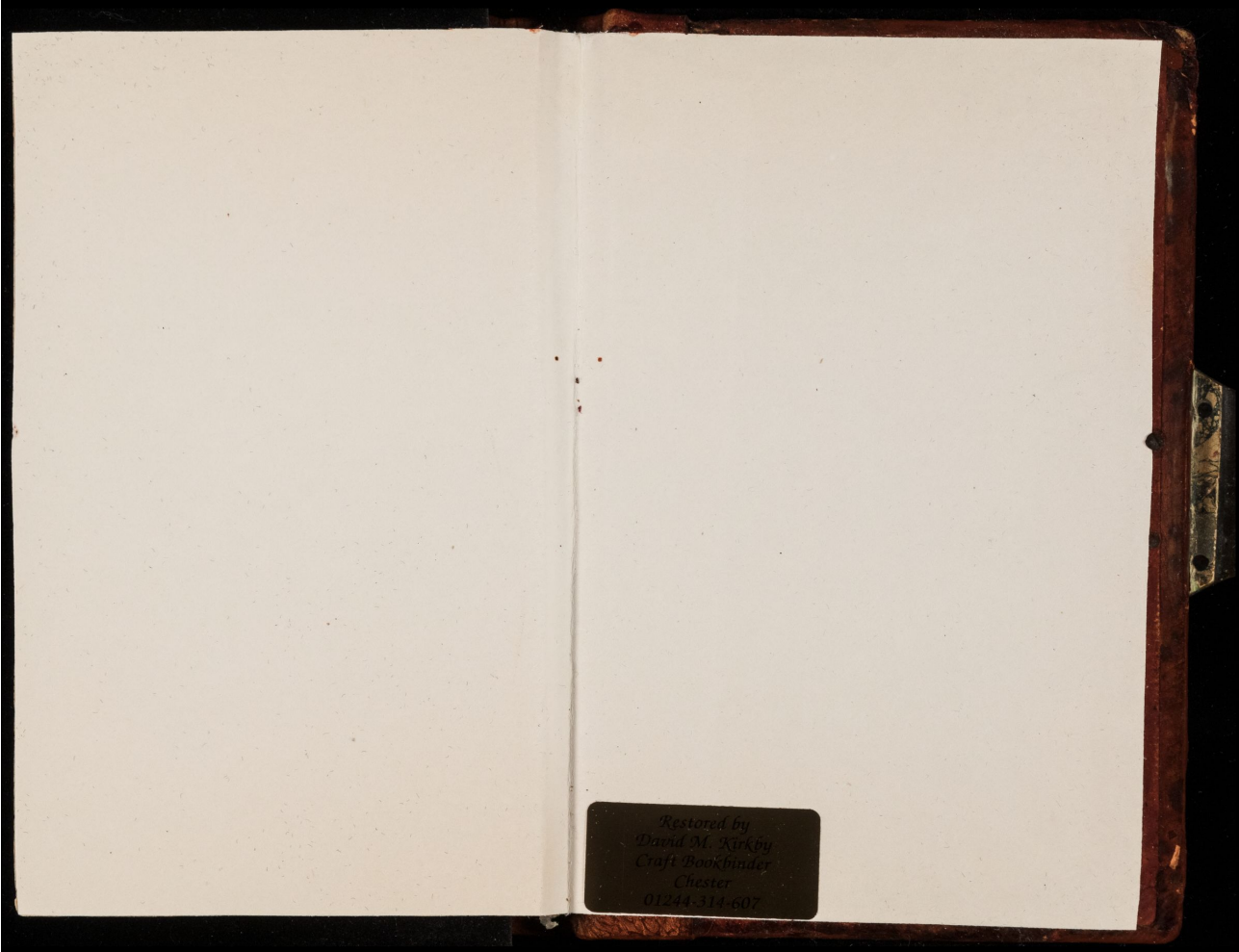
Taken & R. Ro ma 200

1804 ~~an~~ ~~Abella~~ ~~Spain~~ ~~Spain~~
Eleonora ~~Spain~~ ~~Spain~~ ~~Spain~~
write in 1802

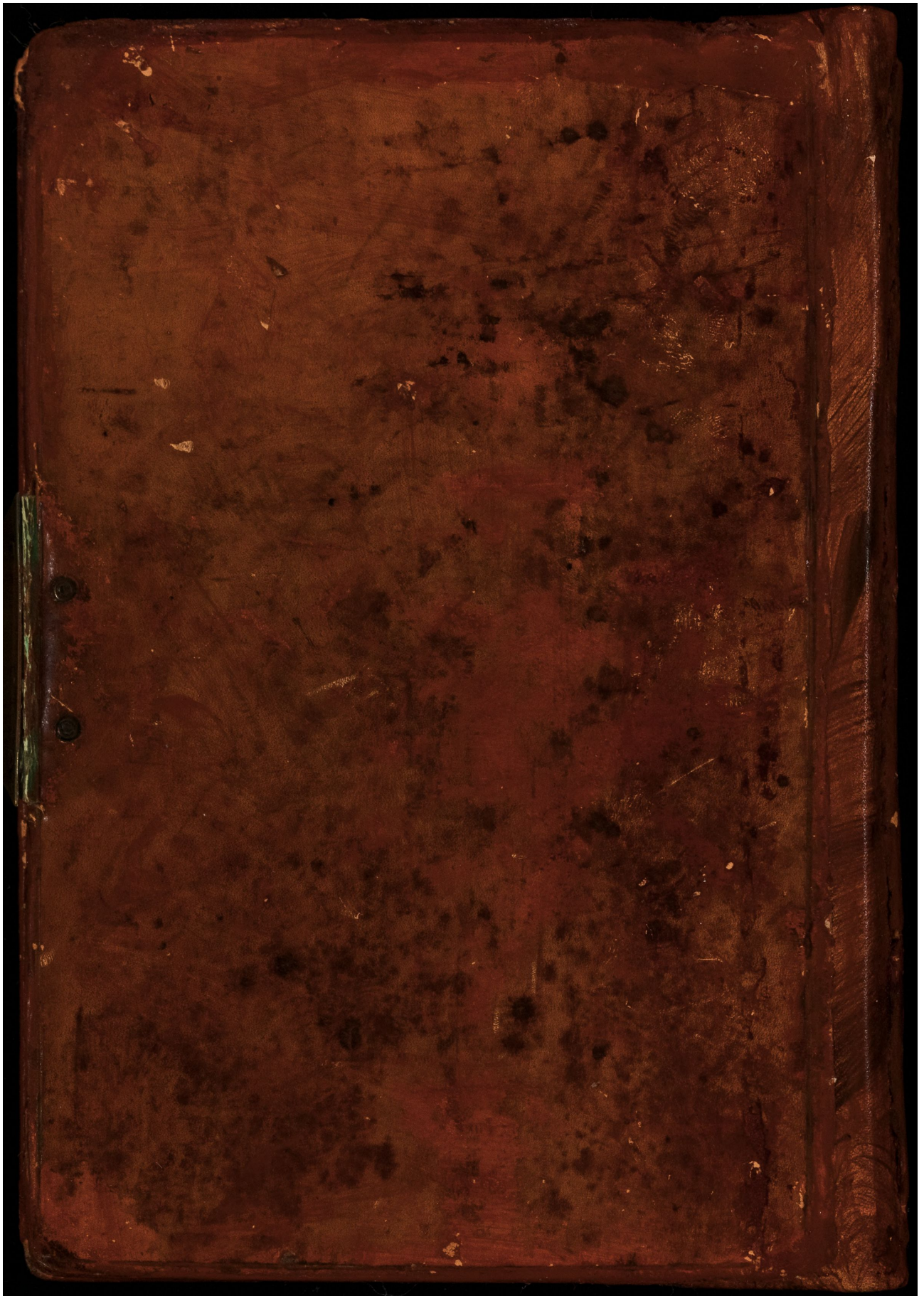
captured } for illicit
by a British } Trade Ra 100 15 gs.
private - }

} average refers to Wilson





Restored by
David M. Kirkby
Craft Bookbinder
Chester
01244 314607



At the ANNUAL GENERAL MEETING of Proprietors of the **Liverpool Marine Assurance Company**, held at the Clarendon Rooms, South John-street, Liverpool, for the election of Directors and Auditors, and for the despatch of the usual business incident to such Meeting, on the 6th day of March, 1833;

ADAM LODGE, Esq. CHAIRMAN.

The Chairman having given a short detail of the proceedings of the Company, during the last year, and having laid the accounts and statements of the affairs before the Meeting,

Resolved unanimously,

On the motion of Mr. CEARNS, seconded by Mr. ORFORD,—That the accounts are approved of by the Meeting, and are declared passed accordingly.

The Chairman having recommended a dividend of £2 per share to be paid on or after the 10th April next,

Resolved unanimously,

That the same is satisfactory, and approved of and confirmed by the Meeting.

Resolved unanimously,

That the thanks of this Meeting be given to the Directors for their valuable and unremitting services and devotion to the interests of the Company for the last year.

A proposition having been made, of which due notice had been given, of a contemplated alteration of the twenty-third Rule or Article of the Deed of Settlement of the Company,

Resolved unanimously,

That so much of the twenty-third Rule as authorises the Directors to employ corresponding Agents or Clerks, in any ports or places in England, shall be, and is altered and extended; and that henceforth the Directors for the time being, shall be, and are authorised to employ such Agents or Clerks, in any other ports and places in England, Scotland, or Ireland.

The Chairman then communicated the resignation of the twelve present Directors to the Meeting, and they having accordingly gone out of office, and Mr. CEARNS and Mr. ORFORD having been appointed Scrutineers for the election of future Directors and Auditors, on a ballot, they reported that the election had fallen on

MR. ADAM LODGE,
" ANDREW LOW,
" W. F. PORTER,
" S. S. GAIR,
" DAVID LAMB,
" WILLIAM NICOL,

MR. J. D. THORNELY,
" WILLIAM WATSON,
" RICHARD EDWARDS,
" JAMES MOON,
" R. S. HENDERSON,
" HEWSON DUTCHMAN,

to be Directors, and they are accordingly appointed and elected to be the Directors of the said Company.

That Mr. JOHN JERDEIN and Mr. GEO. BARTON IRLAM, be the Auditors for the ensuing year, and they are accordingly appointed and elected.

ADAM LODGE, CHAIRMAN.

On the motion of Mr. MAXWELL, seconded by Mr. CEARNS, the thanks of the Meeting were given to the Chairman, for his impartial and able conduct in the Chair.

THE LIVERPOOL MARINE ASSURANCE COMPANY.

Dr.		Stock Account.		Cr.			
		£	s	d	£	s	d
To 2000 Shares at £25 each.....		50,000	0	0			
					By Amount invested in Dock Bonds bearing Interest at 4 per Cent per Annum.....		
					25,000	0	0
					Ditto invested in 4 per Cent Funds of 1826.....		
					24,969	11	2
					Balance in Bank of Liverpool at Credit of Stock Account.....		
					30	0	10
					<u>£50,000 0 0</u>		
		£50,000	0	0			
		(Errors excepted.)					
		JOHN JERDEIN, } Auditors. GEO. HOLT, }					
		LIVERPOOL, 29th Feb. 1833.					

Dr.		Reserved Surplus Fund.		Cr.			
		£	s	d	£	s	d
To Amount of Interest drawn from Stock Account..		1779	14	7			
Perforated deposits on Shares.....		285	0	0			
		£1964	14	7			
		By Amount in the Bank of Liverpool at Credit of Reserved Surplus Fund.....					
		1964 14 7					
		<u>£1964 14 7</u>					
		(Errors excepted.)					
		JOHN JERDEIN, } Auditors. GEO. HOLT, }					
		LIVERPOOL, 29th Feb. 1833.					

Dr.		Premium Account.		Cr.			
		£	s	d	£	s	d
1833. Feb. 29.		To Gross Amount of Premiums arising from Risks, taken to the 29th Feb. 1832.....					
		51,801 14 10					
		Ditto Ditto from Risks taken from 1st March, 1832, to 29th Feb. 1833.....					
		75,542 3 5					
		Reinsurances for Chris. Wilson.....					
		842 8 1					
		<u>128,186 6 4</u>					
		Interest on Premium Account to 31st Dec. 1833.....					
		148 3 4					
		Ditto Ditto 31st Dec. 1832.....					
		346 10 11					
		Ditto Ditto 29th Feb. 1833.....					
		115 15 5					
		<u>610 0 0</u>					
		By Amount of Losses, Averages and Returns, paid to 29th Feb. 1832.....					
		16,909 12 1					
		Ditto Ditto Ditto paid to 29th Feb. 1833.....					
		35,684 0 2					
		Discounts allowed to 29th Feb. 1832.....					
		4,553 3					
		Ditto to 29th Feb. 1833.....					
		6,435 0 0					
		<u>56,981 12 3</u>					
		Amount paid for Stamps to 29th Feb. 1832.....					
		5,014 3 0					
		Ditto Ditto to 29th Feb. 1833.....					
		7,265 15 0					
		<u>12,279 18 0</u>					
		Commissions allowed to Agents to 29th Feb. 1832.....					
		184 17 0					
		Ditto Ditto to 29th Feb. 1833.....					
		165 19 7					
		<u>349 16 7</u>					
		Amount transferred to Stock Account for Bonus Shares on first year's business.....					
		8,325 0 0					
		Office Charges paid, viz—					
		Sundry expenses paid for the establishment to 29th Feb. 1832.....					
		976 4 0					
		Ditto to 29th Feb. 1833.....					
		1,122 4 5					
		Office Expenses.....					
		38 16 0					
		Surveyors' travelling expenses.....					
		63 0 0					
		Richard Brooks, (Solicitor) professional services.....					
		278 14 7					
		Expenses for Act of Parliament.....					
		450 5 2					
		Gratuities to Masters of Ships and others.....					
		53 3 0					
		<u>2,962 7 2</u>					
		Dividends declared in Sept. 1832.....					
		4,000 0 0					
		Amount of Losses, Averages and Returns, to 29th Feb. 1833, on Chris. Wilson's Reinsurances.....					
		198 3 9					
		Amount of Premiums due (chiefly for this month).....					
		15,783 14 9					
		Balance of Cash in Bank of Liverpool.....					
		17,693 4 11					
		Ditto in the hands of the Cashier.....					
		250 14 11					
		<u>17,943 19 10</u>					
		Interest due to the Company per contra, not yet brought to account by them.....					
		115 15 5					
		<u>£128,796 16 0</u>					
		(Errors excepted.)					
		JOHN JERDEIN, } Auditors. GEO. HOLT, }					
		LIVERPOOL, 29th Feb. 1833.					



“ MERSEY ”

SHIP-OWNERS' MUTUAL MARINE INSURANCE ASSOCIATION.
RULES AND WARRANTIES.

THOS. R. ARNOTT, SECRETARY, LIVER CHAMBERS, LIVERPOOL.

I. That the affairs of this Association shall be managed by a Committee of eleven persons, chosen by and from the Members, three to be a quorum, who shall meet once a quarter, or oftener if required, to examine and pass claims, and order payment by the Secretary's draft at Two months' date; and that the Members of this Association, severally and respectively, and not jointly or in partnership, nor the one for the other of them, but each of them only in his own name, shall Insure each other's Ships, or shares of Ships, from Noon of the day of entry of each Vessel, until Noon of the 1st of March following, against losses, perils, and damages, which may be sustained or received by their respective Ships, or caused or done by them to other Ships, except when on the Voyages in the Trades, or under the circumstances herein-after particularly excepted.

II. That the Committee shall have full power to survey or appoint any person or persons to survey Ships Insured in this Association, and to order such stores, materials and repairs, as they may deem necessary; and any Member refusing to comply with the order of the Surveyor, after receiving proper notice of such order through the Secretary, shall, in case of Loss or Average, before the required stores and materials are provided, and repairs done, suffer a deduction of 50 per cent.

III. That all Average Claims, and Claims on abandonment, (not being *bona fide*, "Total Loss,") shall be adjusted and settled conformably to the custom of Lloyd's or the Royal Exchange, by a Professional Average Stater. But should the Committee or the Assured be dissatisfied with such adjustment, they may refer the same to two other Professional Average Staters, with power for such two persons to appoint an umpire, and the award of such three persons shall be final, and all cases of dispute of whatever nature shall be referred in like manner, but the Committee and Assured by mutual consent may refer such claim to one person only, whose award shall also be final.

IV. That in the statement of average, caulking shall not be allowed, except the Vessel has been thoroughly caulked within five years, nor for wood sheathing, if the same has been on more than six years; and the difference of price on Copper or Metal between new and old shall not be allowed, if the same has been on more than four years; but if it has been on only one year, five-sixths of the difference in price shall be allowed; if two years, three-fourths; if three years, two-thirds; if four years, one half.

V. That the Sums to be Insured in this Association, shall be from £500 to £1500 on each Ship. That no Ship shall be admitted, unless British-built, and classed not less than 8 A 1, in Lloyd's Registry Book, and should such character be suspended during the currency of the Policy, the Insurance shall not be again renewed on the 1st of March following, unless the Vessel be re-classed on the conditions as aforesaid.

VI. That any Member shall be allowed to value his Ship, at a fair valuation, (subject to approval by the Committee,) such valuation to be entered in the Policy, and no Member is allowed to Insure his Ship for more than the entered value; but for the purpose of settling special averages on Vessels less than £10 per ton value, a nominal value of £10 per ton shall be set for that purpose.

VII. That Ships shall not be Insured when employed in any unlawful trade, with the knowledge or consent of the assured, nor when employed in the Greenland, Davis' Straits, or Hudson's Bay Trade; nor when or after loading or unloading on any main shore or beach, until surveyed in a safe port, by some person, appointed by the Committee, and re-admitted.

VIII. That no Ship shall be Insured by this Association, sailing from the United Kingdom, on the following voyages, after the periods set opposite thereto, nor until her return to Great Britain or Ireland, and notice thereof be given to the Secretary, who on receiving a true declaration in writing from the Master, that she has not touched the ground during the suspension of the Policy, shall re-admit her, viz.:-

British Colonies in North America, except Newfoundland, (the Ports and Places in the St Lawrence above Cape Gaspe excepted,) 1st September.

The Ports and Places in the St. Lawrence above Cape Gaspe 25th August.

IX. That Ships sailing from the United Kingdom of Great Britain and Ireland, or passing through the British Channel, on the following voyages, after the periods set opposite thereto, shall be subject to a deduction of £10 per cent. in case of Loss or Average.

Ports in the White Sea 1st August,

Lower Ports in the Baltic, not higher than Memel inclusive, and Port or Place in the Belt, Sound, or Categat, except Gottenburgh 20th September.

Riga and the Ports in Riga Bay, and Stockholm 10th September.

The Ports in the Gulf of Finland and Bothnia 1st September.

That the time of clearing at the Custom House be deemed the time of sailing, provided the Ship be laden or ballasted, and fully equipped for the voyage; and that each day be considered by the Members of this Association as ended at Noon.

X. That in the event of any Ship Insured in this Association being in or sailing from any part of the West India Islands, or Colonies, the Bay of Honduras, or any part of the Gulf of Mexico, or the Spanish main, between the 1st day of August and the 1st of January, shall suffer a deduction of 10 per cent. in case of Average or Loss, and all Vessels sailing to and from the Azores, between the 1st of November and the 15th of March, shall suffer a deduction of 15 per cent., and all Vessels sailing out over the Bar of Rio Grande, without the assistance of a Steamer, shall suffer a deduction of 10 per cent. in case of Average or Loss.



SHIP OWNERS' MUTUAL MARINE ASSURANCE ASSOCIATION.

Table with columns: Line or Club, Ship Name, Tonnage, and other details. The text is mirrored and difficult to read.

To Mr. THOS. R. ARNOTT, SECRETARY. I hereby authorize you to insure in your MUTUAL ASSOCIATION all ships as listed above...

THOS. R. ARNOTT

Ocean Assurance Company's Stock Account.

To 10,000 Shares at £10 each	£100,000	0	0
Cr.			
By Investment in Bank Stock at £214	£50,201	3	10
By ditto in the New 3½ per Cent Consols at 98½	25,032	0	1
By ditto on the Bond of the Liverpool and Manchester Railway Company, at 3¼ per Cent per Annum	24,766	16	1—
	100,000	0	0

RESERVED SURPLUS FUND.

To Interest arising from Capital	£1,650	0	9
Cr.			
By Investment on the Bond of the Liverpool and Manchester Railway Co. £233	3	11	
By ditto in Bank Stock at £222	937	18	3
By ditto in New 3½ per Cent Consols at 99½	444	5	8
By Cash in the Bank of Liverpool	34	12	11—
	1,650	0	9

ERRORS EXCEPTED.

Liverpool, 1st January, 1835.

RD. RAWSON, *Manager.*

paid a 5% dis
finally given
Mogely of Harriet
Bank bought a lot
of shares at a very
low price & succeeded
in getting support
to enable him to
visit of the C. F.
The best result
was a very favorable
one & Mogely pocketed
a good thing - My
father told me
the CD hardly had
a single loss from
the time the market
began - Since
as the bank

1800 there were
less a class ^{share for}
Trotter & Star...
Truly the conditions of
underwriting in the
days were as little
from present as they
possibly could be

It is reading P. Rawson

Blank
1 Aug 1786

Joseph Langdon Esq

AMH
1786
JUL 15

